

OCCIDENTAL & CATALOGUE

MILANO






CARPETS

D & C


MILANO


CARPET

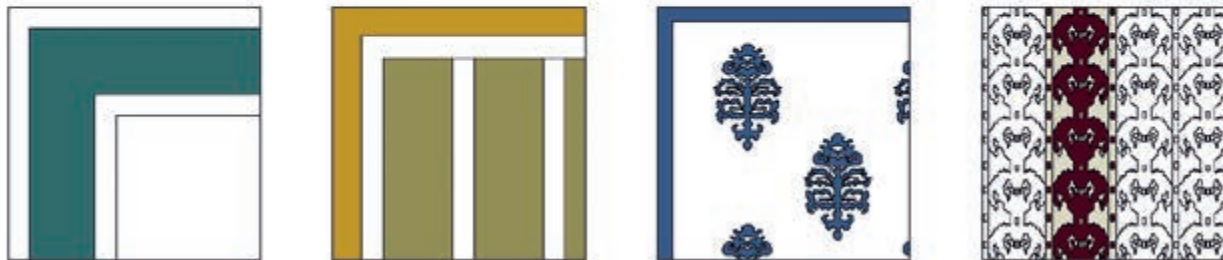
| | | | | | |
|---------------------------|---|----|----------------------------|---|----|
| DESIGN YOUR CARPET |  | 8 | POLYPROPYLENE |  | |
| NATURAL FIBERS |  | | CALLIOPE | | 42 |
| ALDERAN | | 12 | GALATEA | | 43 |
| ALTAIR | | 13 | TALIA | | 44 |
| ARTURO | | 14 | RECYCLED BOTTLES |  | |
| ATLAS | | 15 | ADDA | | 46 |
| AVIOR | | 16 | ADIGE | | 47 |
| BELLATRIX | | 17 | ARNO | | 48 |
| BOREA | | 18 | PO | | 49 |
| ELECTRA | | 19 | SESIA | | 50 |
| GEMMA | | 20 | TEVERE | | 51 |
| IDRA | | 21 | | | |
| KILIM CARDO | | 22 | COLOUR CARDS | | |
| KILIM CONTRADA | | 23 | CARPET COLOUR CARDS | | 54 |
| KILIM DIAMANTE | | 24 | | | |
| KILIM MILLERIGHE | | 25 | SYMBOLS | | 59 |
| KILIM PAESAGGIO | | 26 | | | |
| KILIM QUADRO | | 27 | | | |
| KILIM STAGIONI | | 28 | | | |
| KIRK | | 29 | | | |
| LING PIPISTRELLO | | 30 | | | |
| LIRA | | 31 | | | |
| MAIA | | 32 | | | |
| MEISSA | | 33 | | | |
| MERCURIO | | 34 | | | |
| ORIONE | | 35 | | | |
| PERSEO | | 36 | | | |
| PLUTONE | | 37 | | | |
| POLARIS | | 38 | | | |
| SIRIO | | 39 | | | |
| URANO | | 40 | | | |

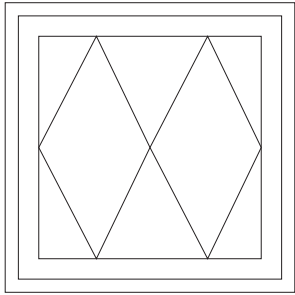
DESIGN YOUR CARPET



C&C Milano offre la possibilità di modificare o elaborare il disegno del tappeto per soddisfare le esigenze dei clienti. Grazie alla vasta gamma colore composta da 200 sfumature, si possono creare numerose combinazioni. È possibile modificare le misure dei bordi e le dimensioni dei pattern. In caso di disegno personalizzato, si dovrà attendere la verifica dell'eventuale fattibilità di realizzazione. È possibile applicare il disegno ai tappeti contrassegnati con il simbolo 

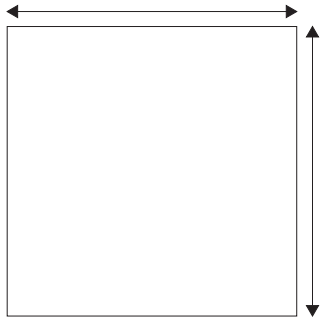
C&C Milano offers the possibility to modify or customize carpet to meet clients' needs. Thanks to a wide range of 200 shades of colours, it is possible to make multiple combinations. It is possible also to modify border size and pattern dimension. In case of custom design, you will need confirmation of feasibility. It is possible to use pattern on carpets with symbol 





STEP 1

Selezionare disegno e qualità del tappeto; è possibile richiedere modifiche o varianti del motivo esistente
Select design and quality of the carpet; it is possible to request changes or variations to an existing pattern



STEP 2

Specificare dimensioni e forma
Specify dimensions and shape



STEP 3

Selezionare uno o più colori dalla nostra cartella composta da 200 sfumature
Select one or more colours from our card composed of 200 shades

Cartella colori tappeti pag. 55-59 Carpets colour card pag. 55-59

I nostri prodotti sono di alta qualità e fatti a mano, necessitano perciò una cura particolare al fine di preservarne lo splendore a lungo.

Consigliamo solo lavaggio a secco in lavanderie specializzate nel trattamento dei tappeti.

I tappeti in seta o composti da più qualità di filati, essendo più delicati dovrebbero essere lavati solo a secco in modo professionale; la lana invece si può trattare delicatamente con acqua e sapone neutro.

Per la pulizia quotidiana si può usare l'aspirapolvere alla potenza minima. In caso di macchie locali, lo sporco può essere tamponato con un panno umido e sapone neutro prima del trattamento professionale in lavanderia.

Trattandosi dei tappeti realizzati su misura, le dimensioni, le proporzioni di disegno e il tono dei colori possono avere una variabilità del 10% da un tappeto all'altro, questa è una caratteristica preziosa perché attesta l'originalità della produzione.

Our products are high quality, hand made items. Therefore they need accurate care in order to preserve their splendor along the time.

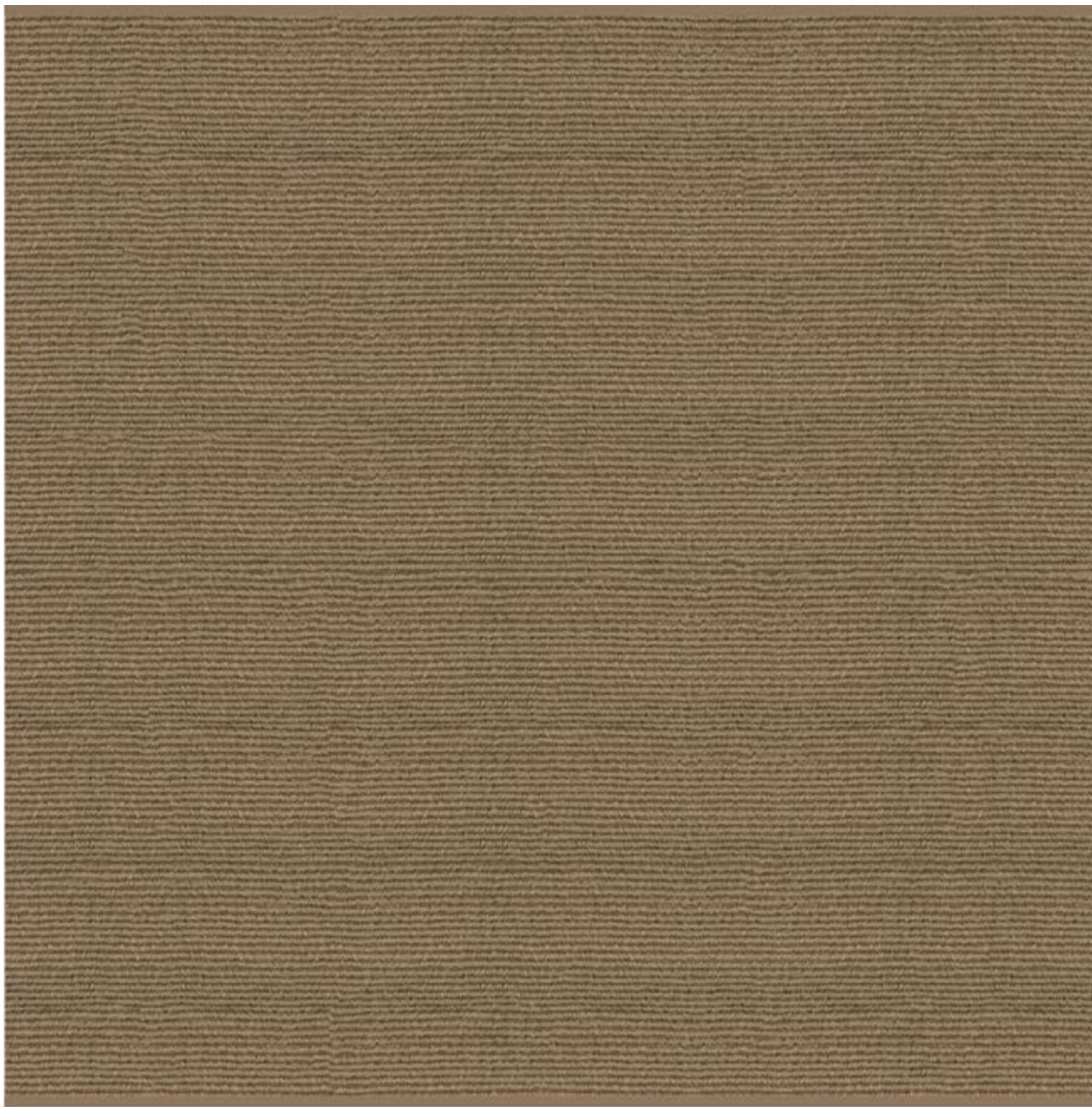
We recommend dry cleaning only in professional laundry.

Silk or polyfibers carpets are very difficult to clean and should be done only professionally; wool is easier treat so delicate water cleaning is acceptable.

For everyday care we suggest to vacuum at the lowest power.

In case of limited stains, dirt can be immediately soak with cold water and mild soap before sending to a professional cleaner.

Since the carpets are handmade, size, drawing proportions and colour shade can have a variability of 10% from a carpet to another, this is a precious feature because attests the originality of the manufacturing and are part of the natural beauty.



Colore: su richiesta
Colour: on demand

Composizione: 95% mohair, 5% lana NZ
Composition: 95% mohair, 5% NZ wool

Peso: 2670 g/m²
Weight: 2670 g/m² - 79 Oz/yd²

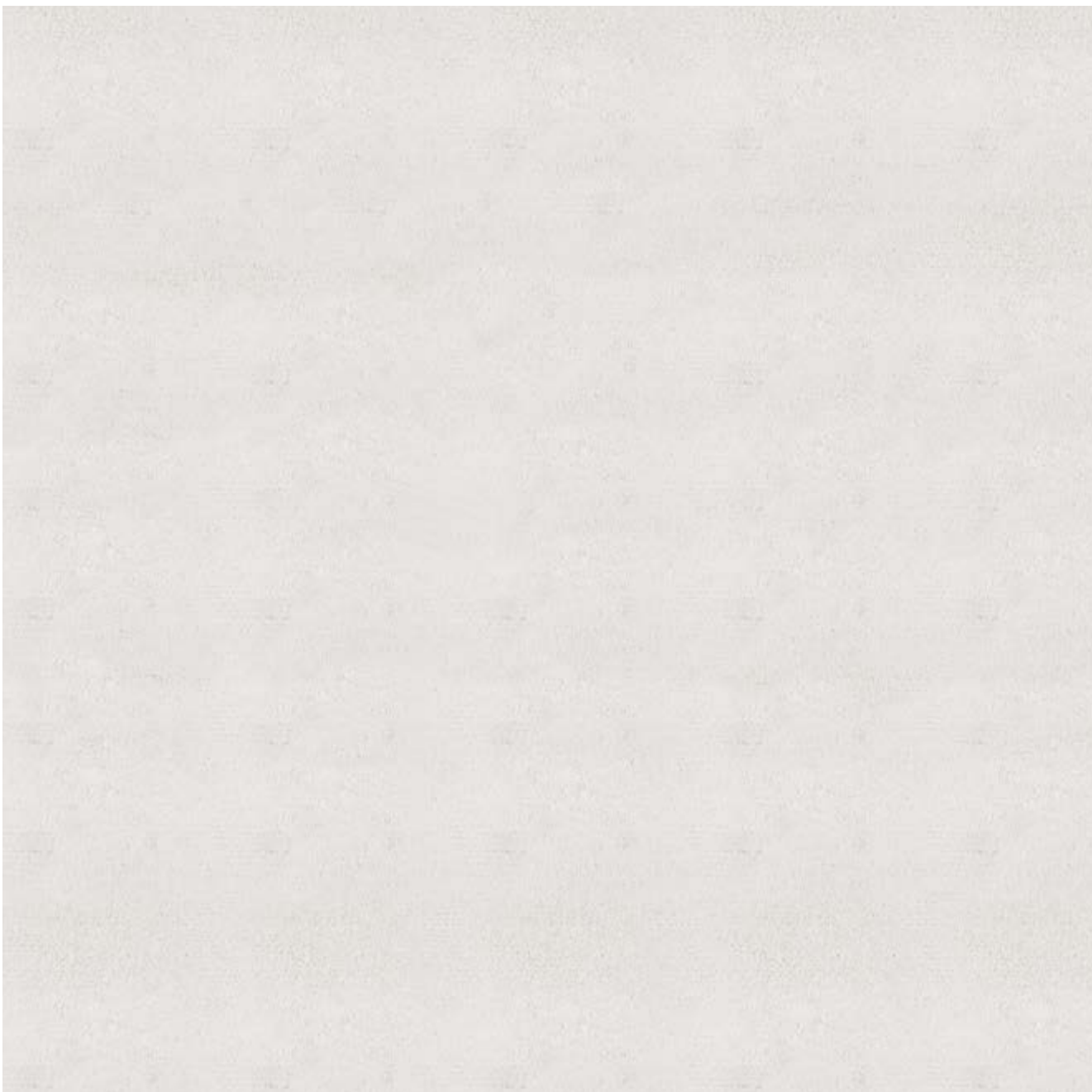
Misure max: 420x900 cm
Max size: 420x900 cm / 165x354"

Altezza pelo: 0,5 cm
Pile height: 0,5 cm / 1/4"

Tessitura: annodato a mano
Weaving: hand knotted



* In foto il tappeto misura 200x200 cm - Carpet size 200x200 cm / 79"x79"



Colore/colour: su richiesta/ on demand
Modifiche/ variations: disegno/ pattern

Composizione: 100% alpaca
Composition: 100% alpaca

Peso: 6770 g/m²
Weight: 6770 g/m² - 200 Oz/yd²

Misure max: 480x900 cm
Max size: 480x900 cm / 189x354"

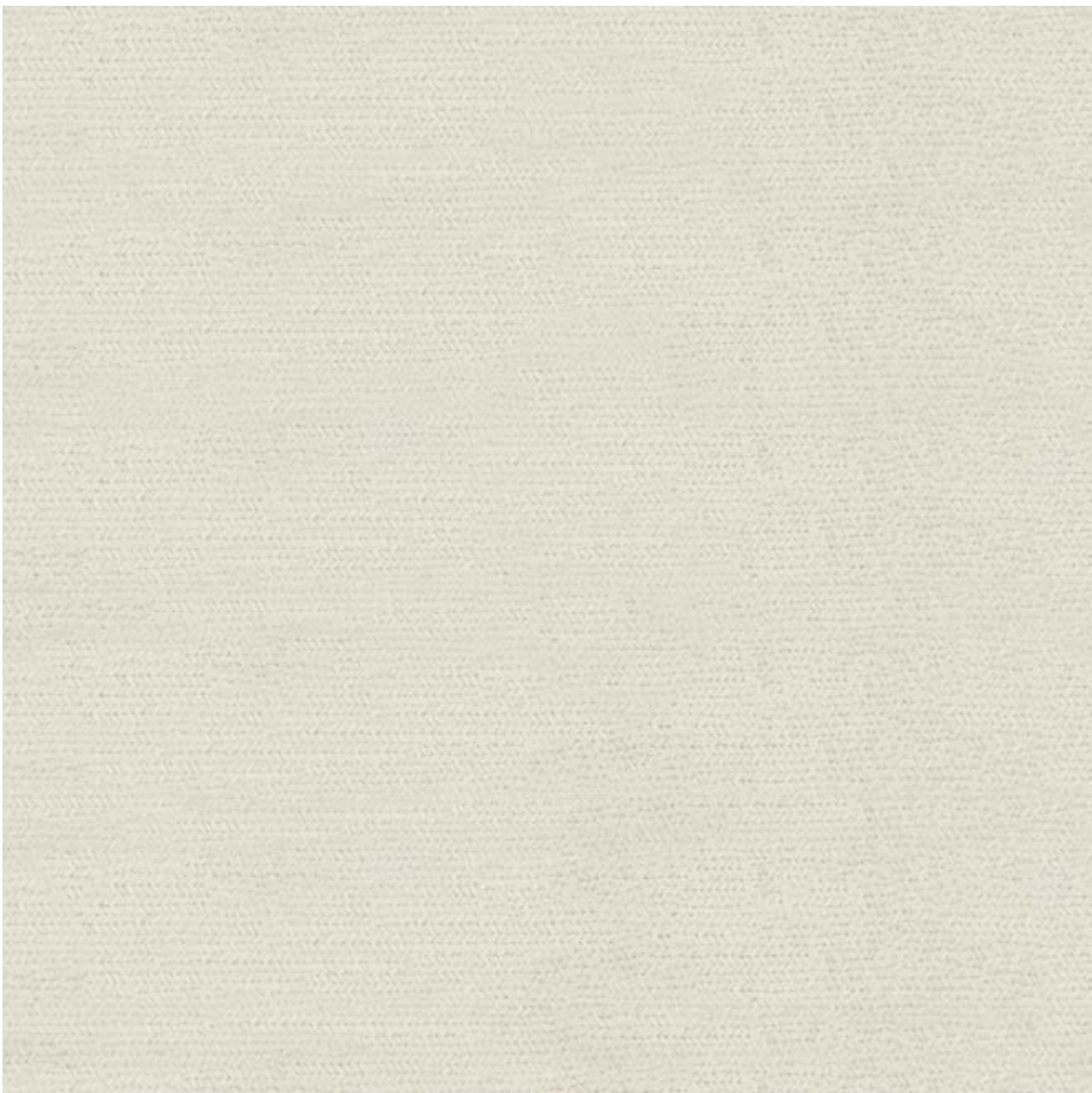
Altezza pelo: 1 cm
Pile height: 1 cm / 1/2"

Tessitura: annodato a mano
Weaving: hand knotted



* In foto il tappeto misura 200x200 cm - Carpet size 200x200 cm / 79"x79"

ARTURO



Colore: su richiesta
Colour: on demand

Composizione: 100% lana NZ
Composition: 100% NZ wool

Peso: 3895 g/m²
Weight: 3895 g/m² - 115 Oz/yd²

Misure max: 480x900 cm
Max size: 480x900 cm / 189x354"

Altezza pelo: piatto
Pile height: flat

Tessitura: tessuto a mano
Weaving: hand woven



* In foto il tappeto misura 200x200 cm - Carpet size 200x200 cm / 79"x79"

ATLAS



Colore: su richiesta
Colour: on demand

Composizione: 100% lana
Composition: 100% wool

Peso: 1640 g/m²
Weight: 1640 g/m² - 48 Oz/yd²

Misure max: 420x900 cm
Max size: 420x900 cm / 165x354"

Altezza pelo: piatto
Pile height: piatto

Tessitura: tessuto a mano
Weaving: hand woven



* In foto il tappeto misura 200x200 cm - Carpet size 200x200 cm / 79"x79"



Colore: su richiesta
Colour: on demand

Composizione: 100% lana Merino
Composition: 100% Merino wool

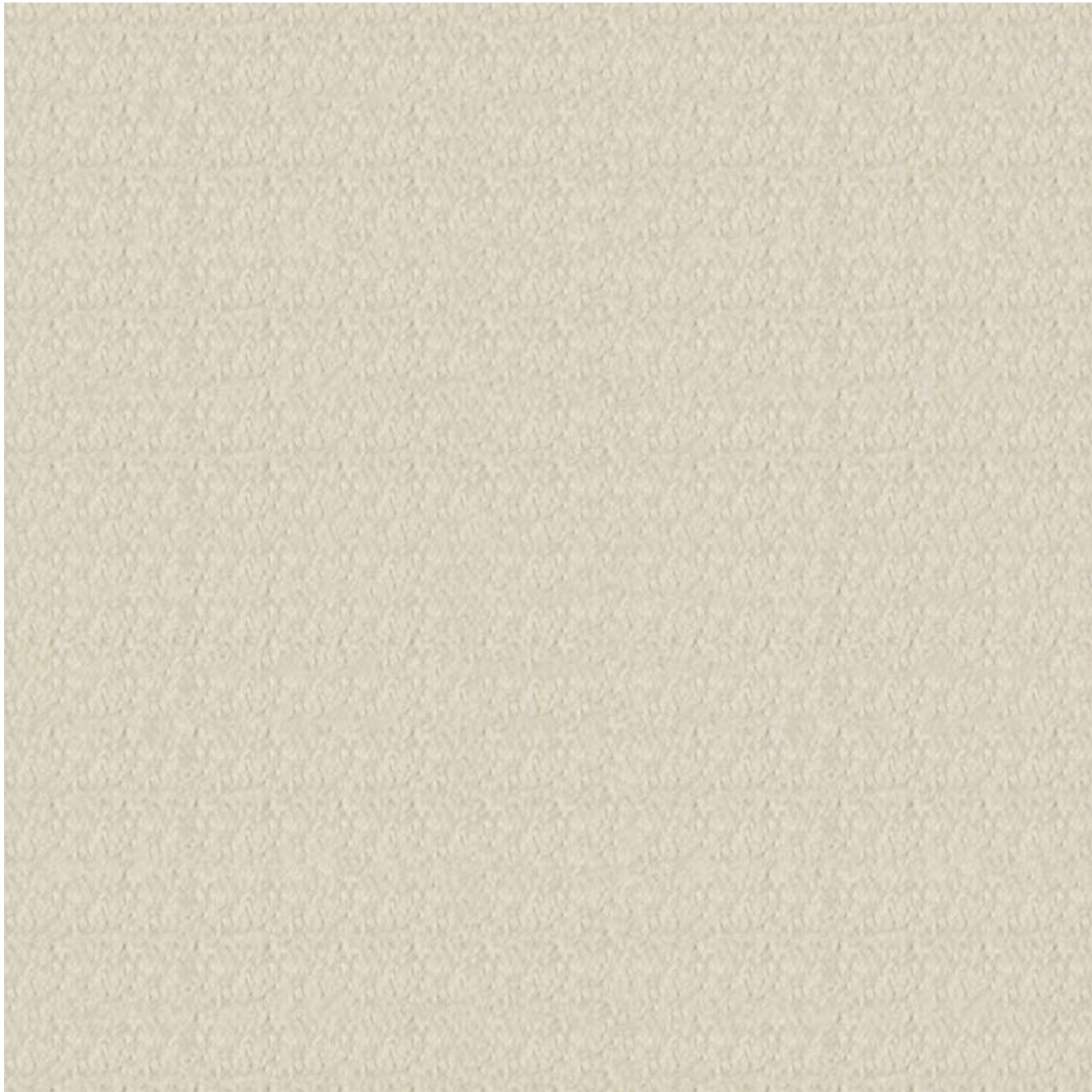
Peso: 3690 g/m²
Weight: 3690 g/m² - 109 Oz/yd²

Misure max: 480x900 cm
Max size: 480x900 cm / 189x354"

Altezza pelo: piatto
Pile height: flat

Tessitura: tessuto a mano
Weaving: hand woven





Colore: su richiesta
Colour: on demand

Composizione: 90% mohair, 10% lana
Composition: 90% mohair, 10% wool

Peso: 4100 g/m²
Weight: 4100 g/m² - 121 Oz/yd²

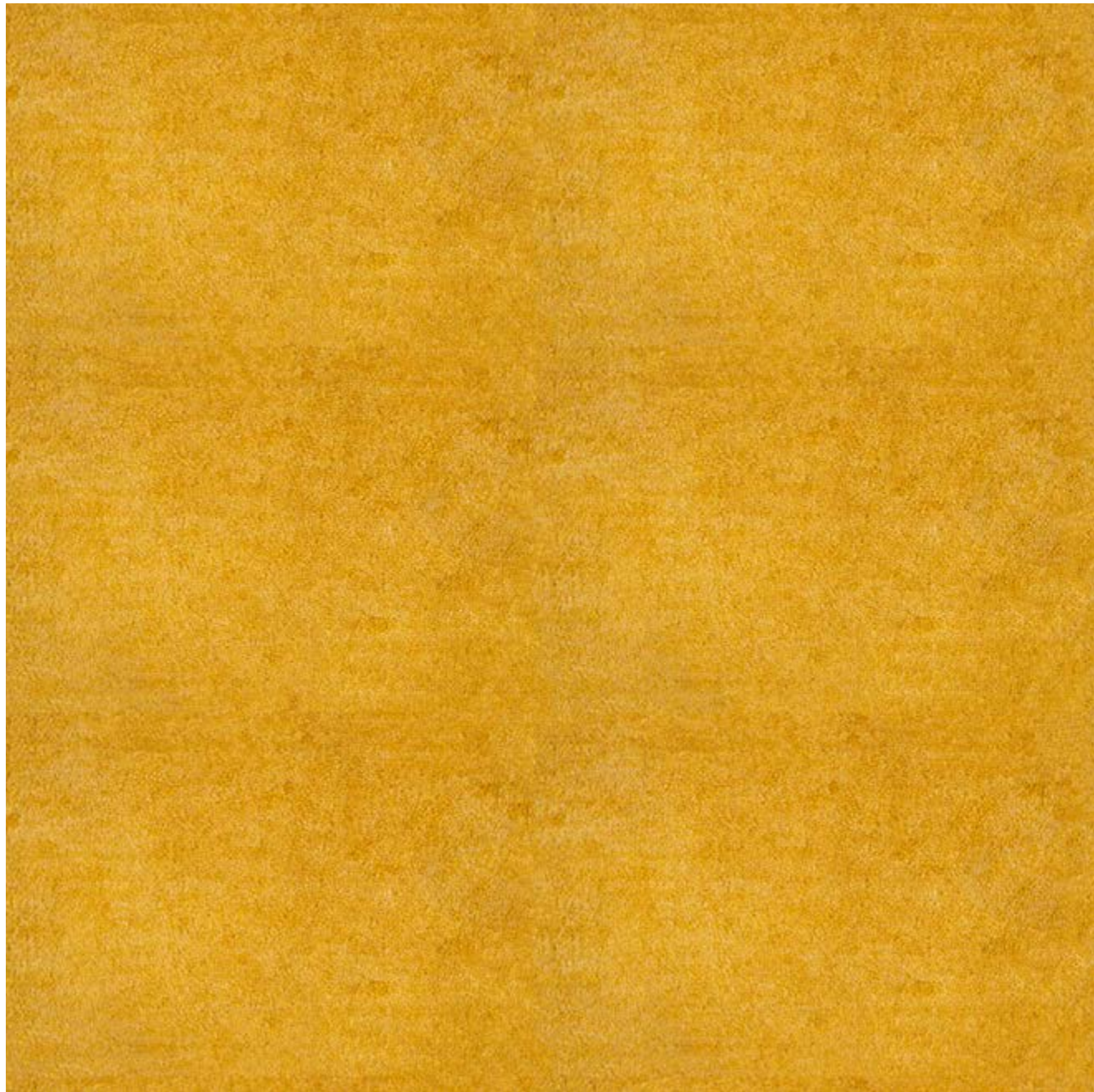
Misure max: 480x900 cm
Max size: 480x900 cm / 189x354"

Altezza pelo: 3,5 cm
Pile height: 3,5 cm / 1-1/2"

Tessitura: annodato a mano
Weaving: hand knotted



* In foto il tappeto misura 200x200 cm - Carpet size 200x200 cm / 79"x79"



Colore / colour: su richiesta / on demand
Modifiche / variations: disegno / pattern

Composizione: 100% cashmere
Composition: 100% cashmere

Peso: 5950 g/m²
Weight: 5950 g/m² - 175 Oz/yd²

Misure max: 480x900 cm
Max size: 480x900 cm / 189x354"

Altezza pelo: 1 cm
Pile height: 1 cm / 1/2"

Tessitura: annodato a mano
Weaving: hand knotted



ELECTRA



Colore: su richiesta
Colour: on demand

Composizione: 100% cactus
Composition: 100% cactus

Peso: 2650 g/m²
Weight: 2650 g/m² - 78 Oz/yd²

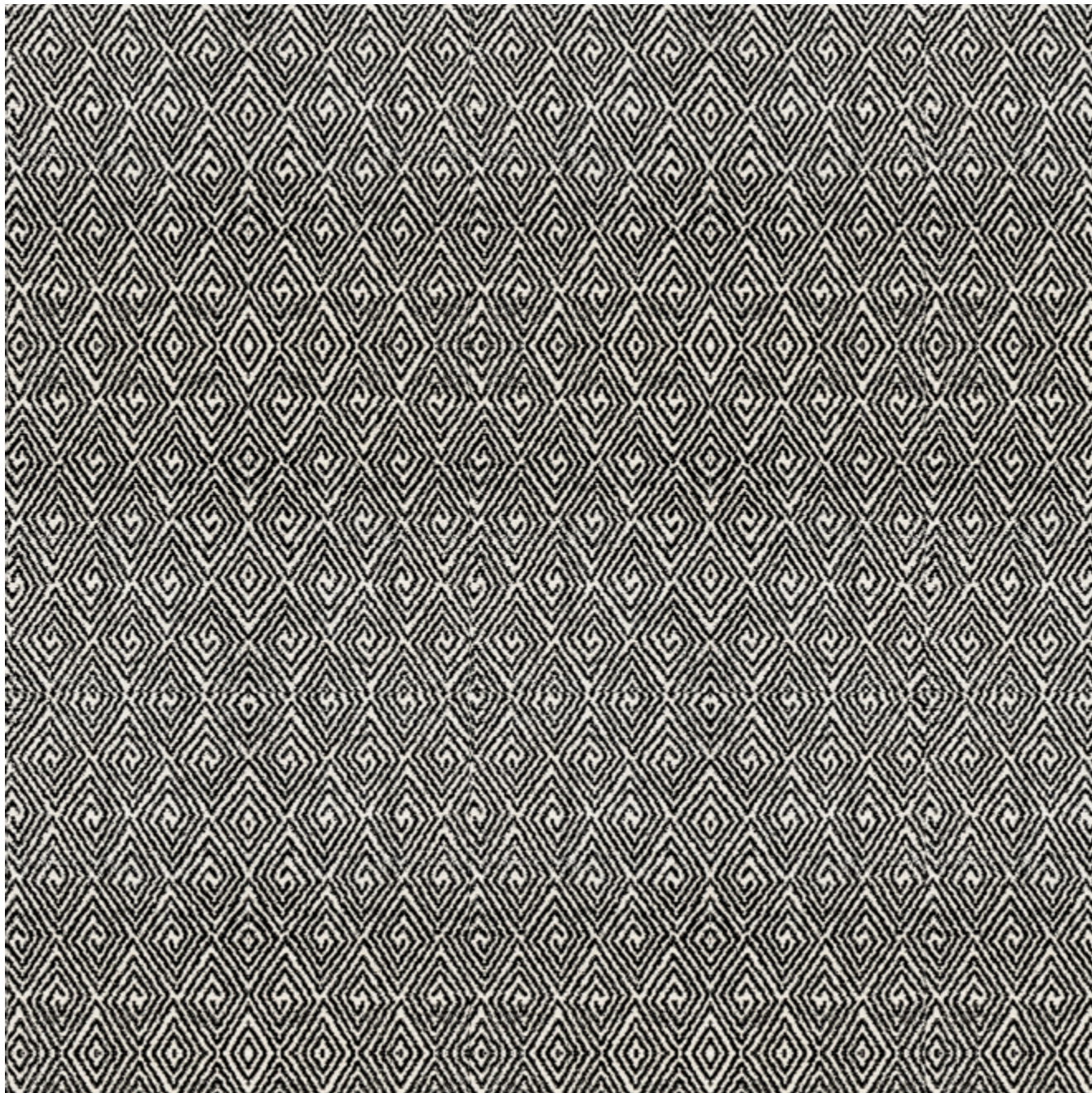
Misure max: 420x900 cm
Max size: 420x900 cm / 165x354"

Altezza pelo: 0,5 cm
Pile height: 0,5 cm / 1/4"

Tessitura: tessuto a mano
Weaving: hand woven



* In foto il tappeto misura 200x200 cm - Carpet size 200x200 cm / 79"x79"



Colore: su richiesta
Colour: on demand

Composizione: 100% lino
Composition: 100% linen

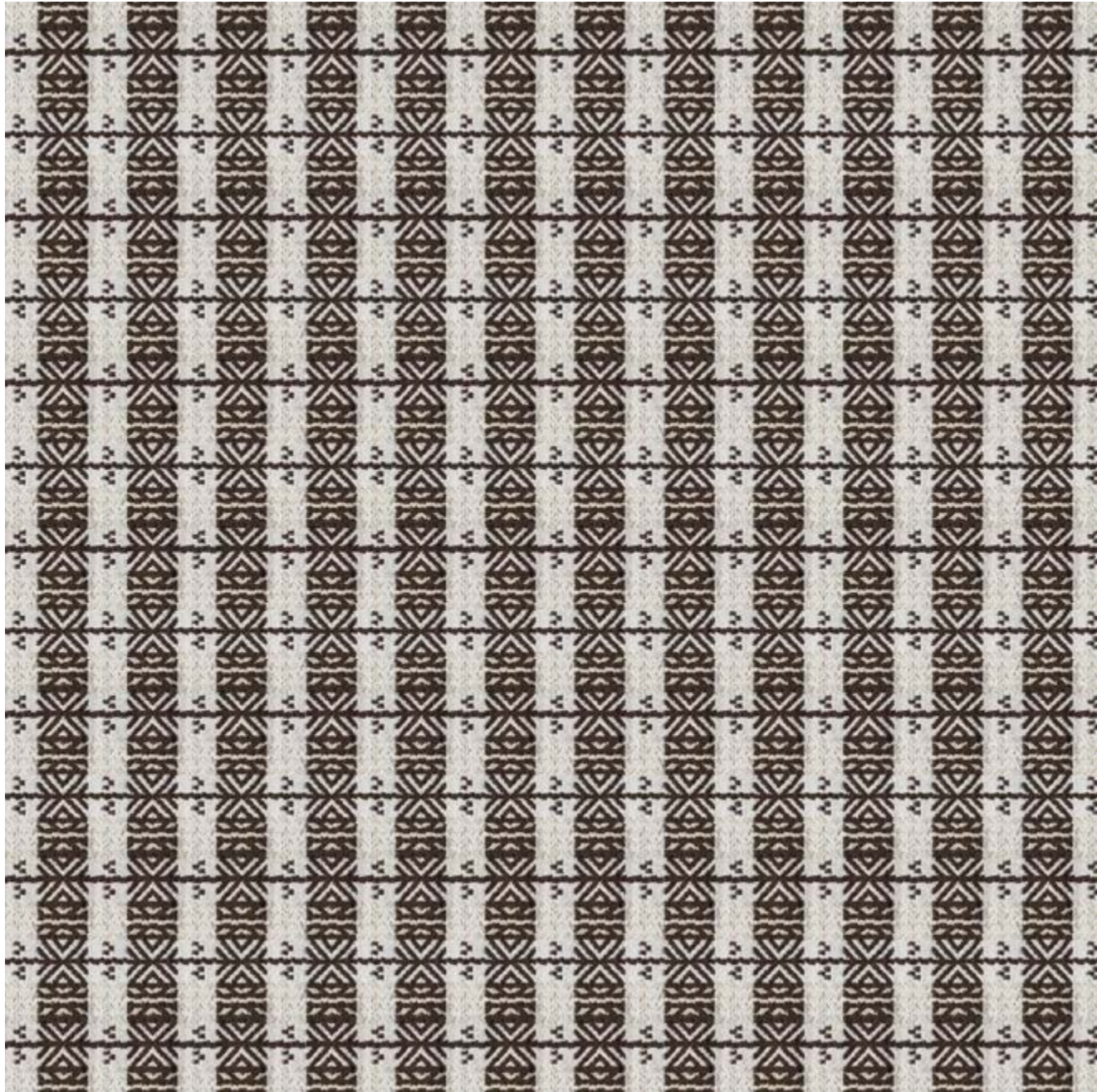
Peso: 4500 g/m²
Weight: 4500 g/m² - 133 Oz/yd²

Misure max: 480x900 cm
Max size: 480x900 cm / 189x354"

Altezza pelo: 1 cm
Pile height: 1 cm / 1/2"

Tessitura: annodato a mano
Weaving: hand knotted





Colore: su richiesta
Colour: on demand

Composizione: 100% lana
Composition: 100% wool

Peso: 1800 g/m²
Weight: 1800 g/m² - 53 Oz/yd²

Misure max: 420x900 cm
Max size: 420x900 cm / 165x354"

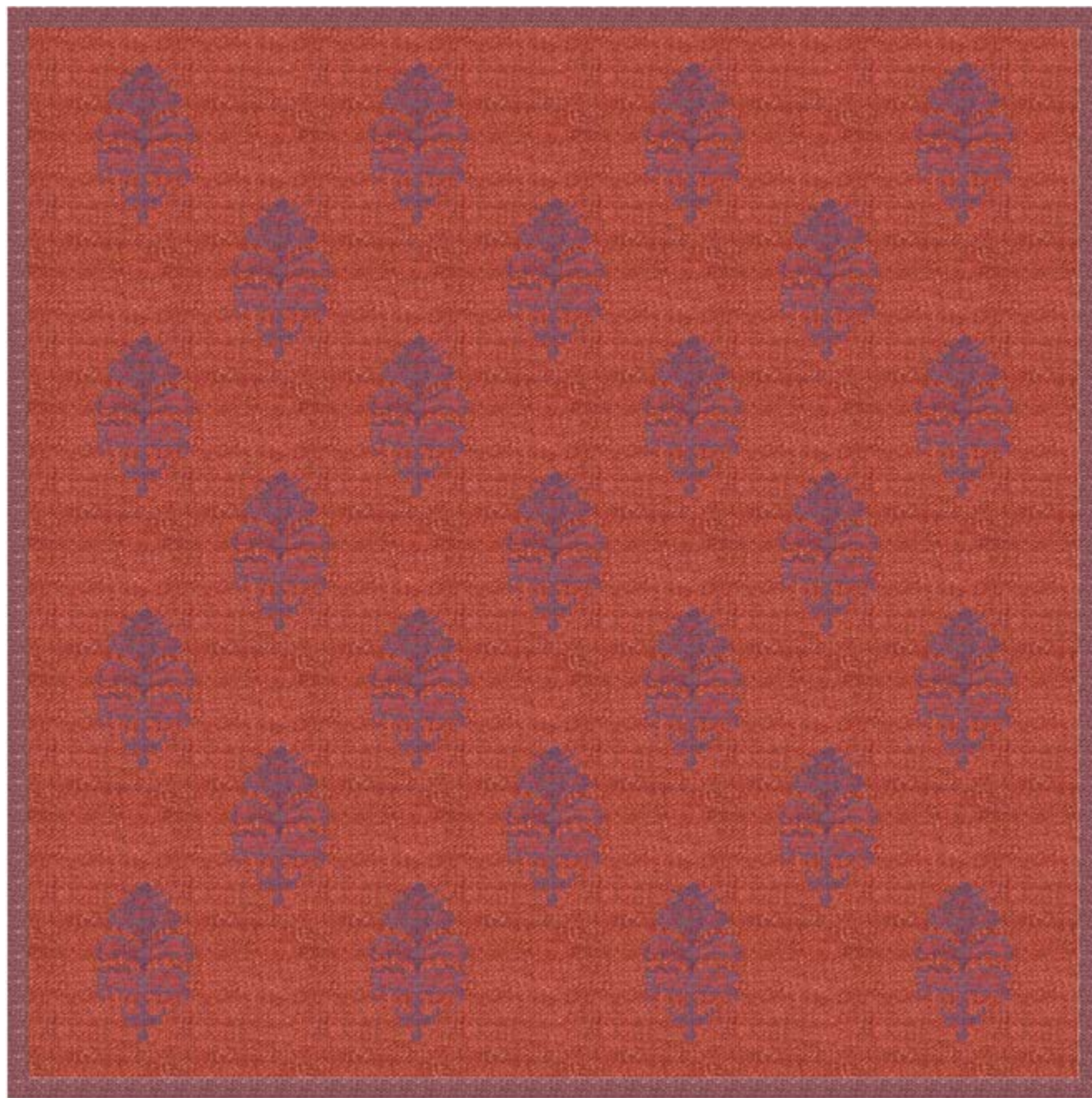
Altezza pelo: piatto
Pile height: piatto

Tessitura: tessuto a mano
Weaving: hand woven



* In foto il tappeto misura 200x200 cm - Carpet size 200x200 cm / 79"x79"

KILIM CARDO



1- Bordino 4 cm/ Border 4 cm - 2"

2- Decorazione/ Decoration

3- Fondo/ Ground

Colore/ colour: su richiesta / on demand

Modifiche/ variations: disegno / pattern

Composizione: 100% lana

Composition: 100% wool

Peso: 1840 g/m²

Weight: 1840 g/m² - 54 Oz/yd²

Misure max: 420x900 cm

Max size: 420x900 cm / 165x354"

Altezza pelo: piatto

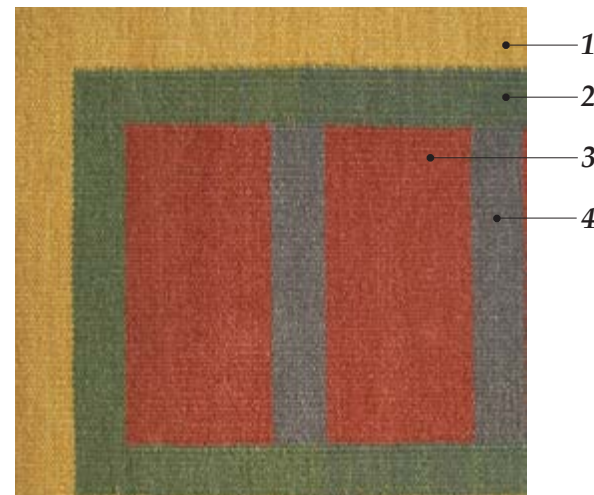
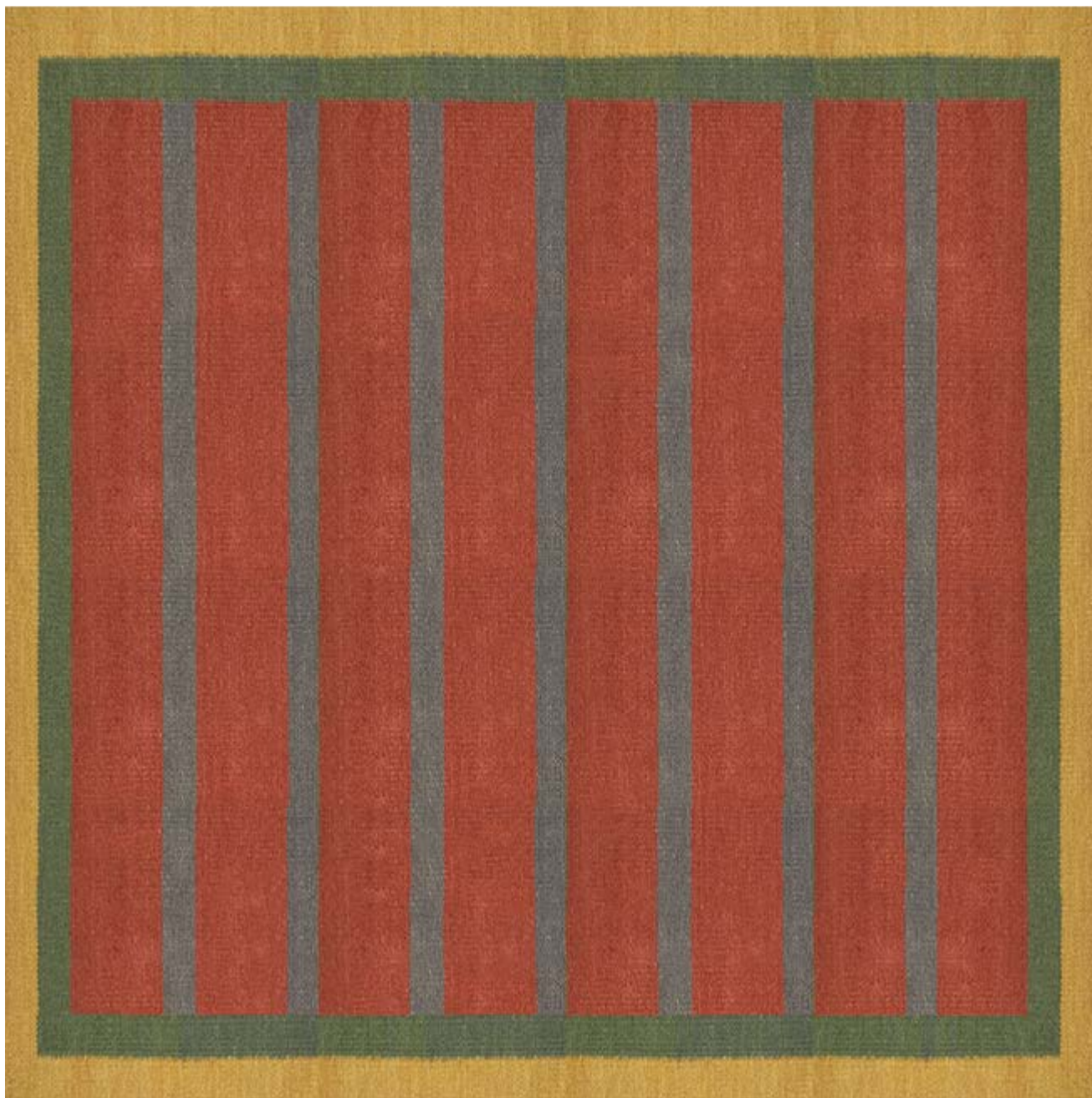
Pile height: flat

Tessitura: kilim tessuto a mano 

Weaving: hand woven kilim



KILIM CONTRADA



1- Bordo 8 cm/ Border 8 cm - 3"

2- Bordino 6 cm/ Border 6 cm - 2"

3- Fascia larga/ Wide band

4- Fascia stretta 6 cm/ Small band 6 cm - 2"

Colore/ colour: su richiesta / on demand

Modifiche/ variations: disegno / pattern

Composizione: 100% lana

Composition: 100% wool

Peso: 1840 g/m²

Weight: 1840 g/m² - 54 Oz/yd²

Misure max: 420x900 cm

Max size: 420x900 cm / 165x354"

Altezza pelo: piatto

Pile height: flat

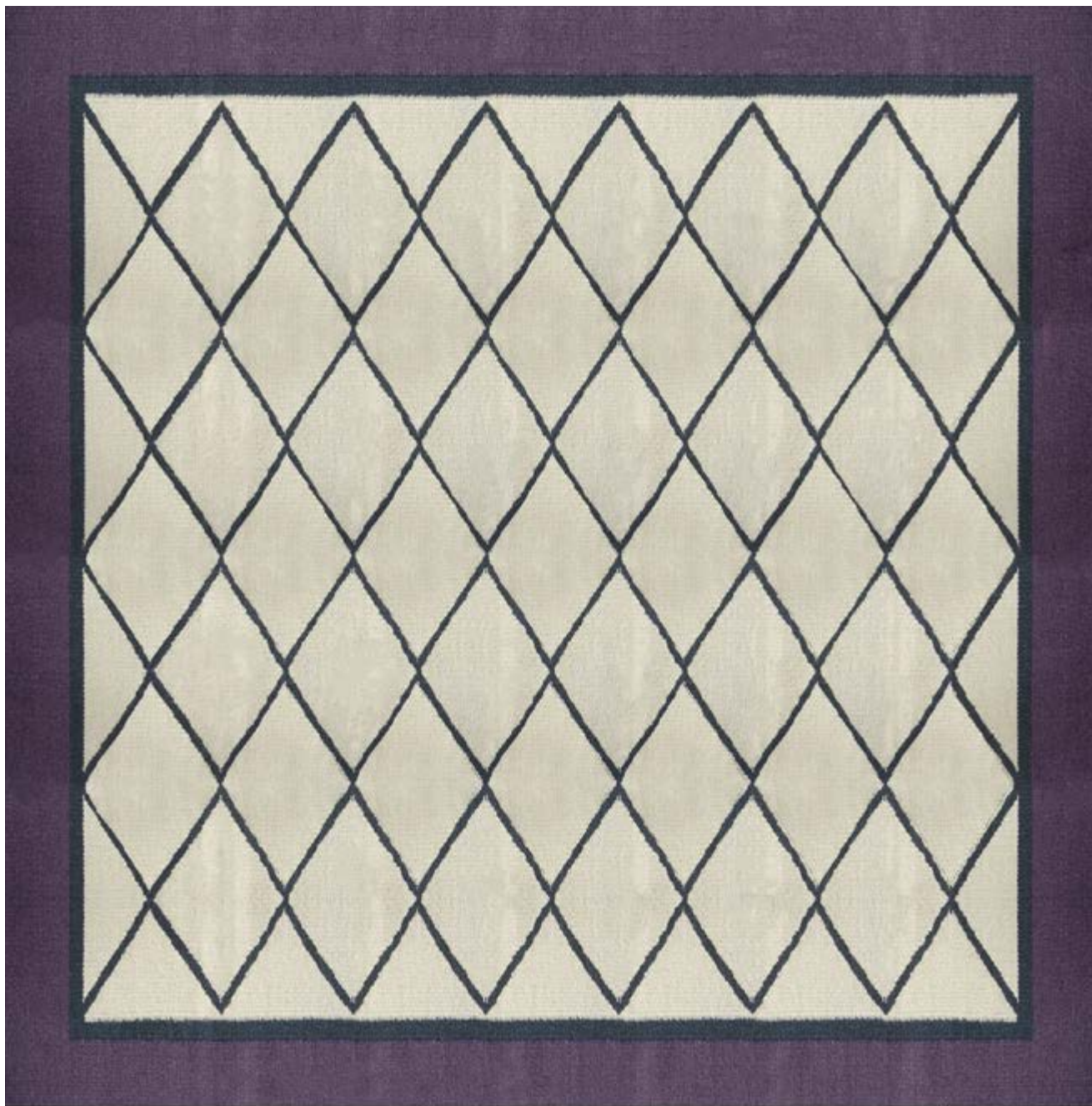
Tessitura: kilim tessuto a mano 

Weaving: hand woven kilim



* In foto il tappeto misura 200x200 cm - Carpet size 200x200 cm / 79"x79"

KILIM DIAMANTE



1- Bordo 18 cm/ Border 18 cm - 7"

2- Bordino 3 cm/ Border 3 cm - 1"

3- Fascia 2 cm/ Band 2 cm - 1/2"

4- Fondo/ Ground

Colore/ colour: su richiesta / on demand

Modifiche/ variations: disegno / pattern

Composizione: 100% lana

Composition: 100% wool

Peso: 1840 g/m²

Weight: 1840 g/m² - 54 Oz/yd²

Misure max: 420x900 cm

Max size: 420x900 cm / 165x354"

Altezza pelo: piatto

Pile height: flat

Tessitura: kilim tessuto a mano 

Weaving: hand woven kilim



KILIM MILLERIGHE



1- Fascia 23,3/21,5 cm
Band 23,3/21,5 cm - 9"/8"

2- Fascia 23,3/21,5 cm
Band 23,3/21,5 cm - 9"/8"


Colore / colour: su richiesta / on demand
Modifiche / variations: disegno / pattern

Composizione: 100% lana
Composition: 100% wool

Peso: 1840 g/m²
Weight: 1840 g/m² - 54 Oz/yd²

Misure max: 420x900 cm
Max size: 420x900 cm / 165x354"

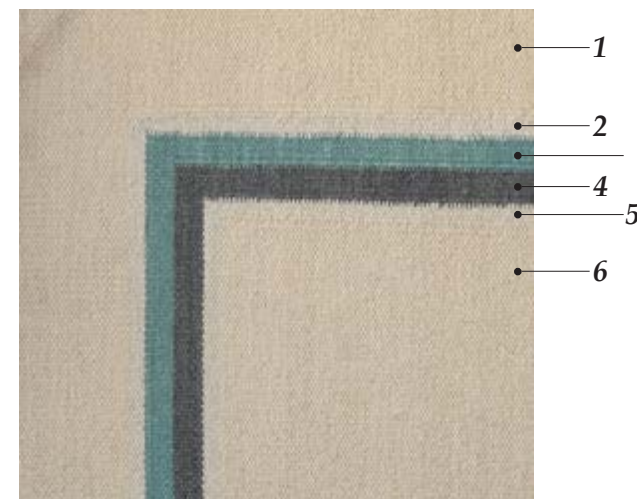
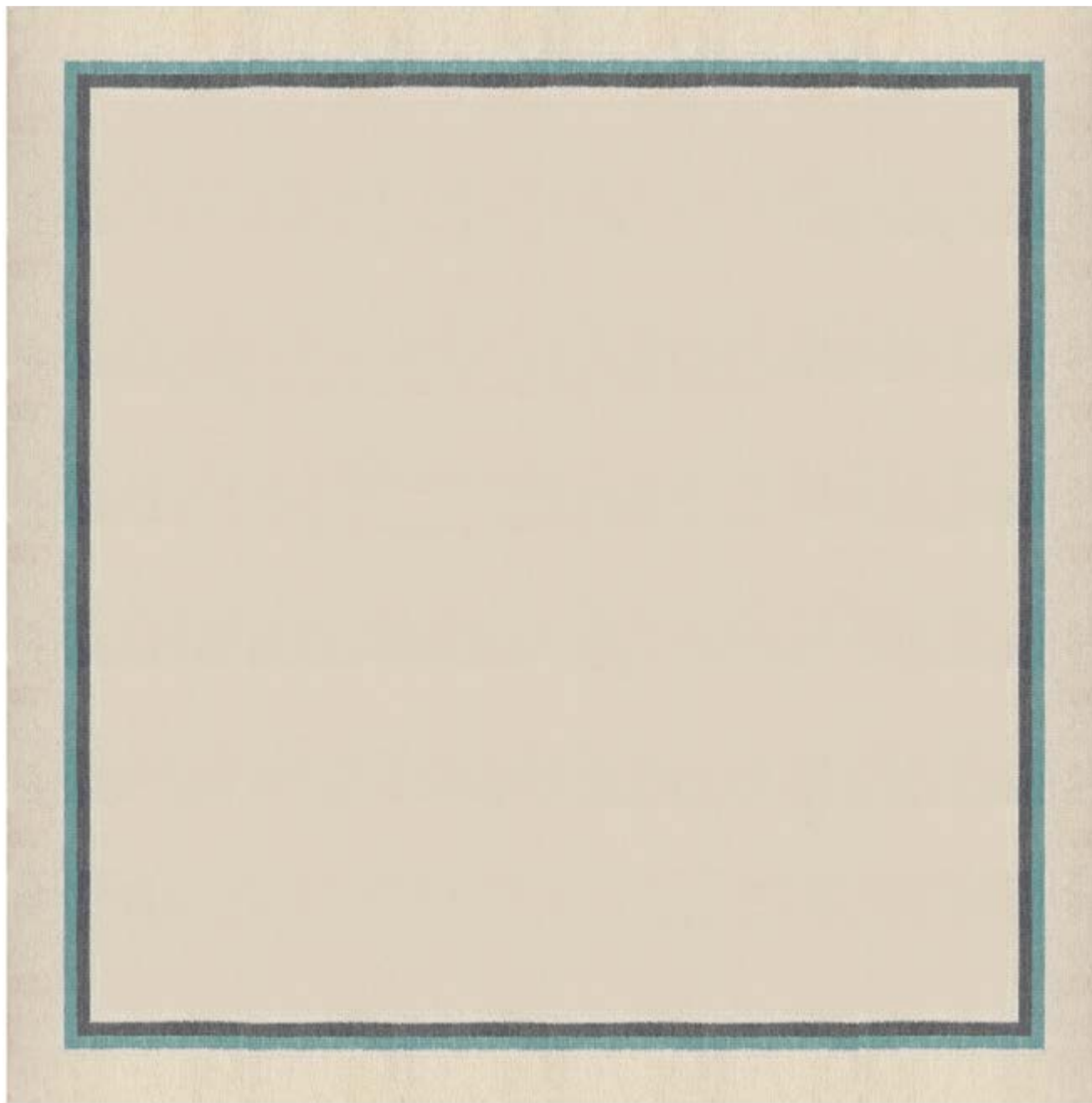
Altezza pelo: piatto
Pile height: flat

Tessitura: kilim tessuto a mano 
Weaving: hand woven kilim



* In foto il tappeto misura 200x200 cm - Carpet size 200x200 cm / 79"x79"

KILIM PAESAGGIO



- 1- Fascia 15 cm/ Band 15 cm - 6"
- 2- Fascia 1,5 cm/ Band 1,5 cm - 1/2"
- 3- Fascia 3 cm/ Band 3 cm - 1"
- 4- Fascia 3 cm/ Band 3 cm - 1"
- 5- Fascia 1,5 cm/ Band 1,5 cm - 1/2"
- 6- Fondo/ Ground

Colore/ colour: su richiesta / on demand

Modifiche/ variations: disegno / pattern

Composizione: 100% lana

Composition: 100% wool

Peso: 1840 g/m²

Weight: 1840 g/m² - 54 Oz/yd²

Misure max: 420x900 cm

Max size: 420x900 cm / 165x354"

Altezza pelo: piatto

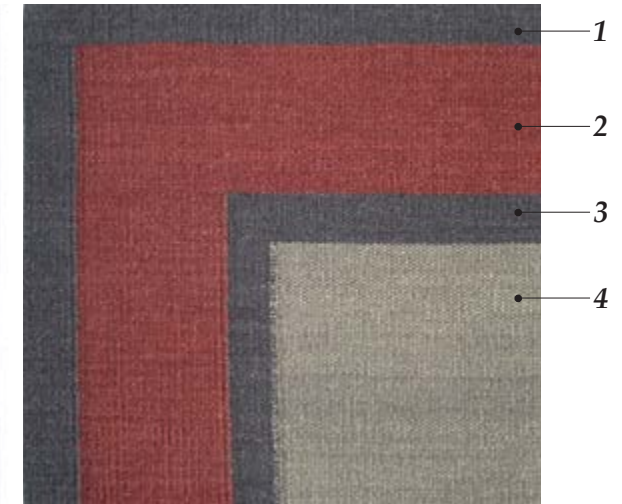
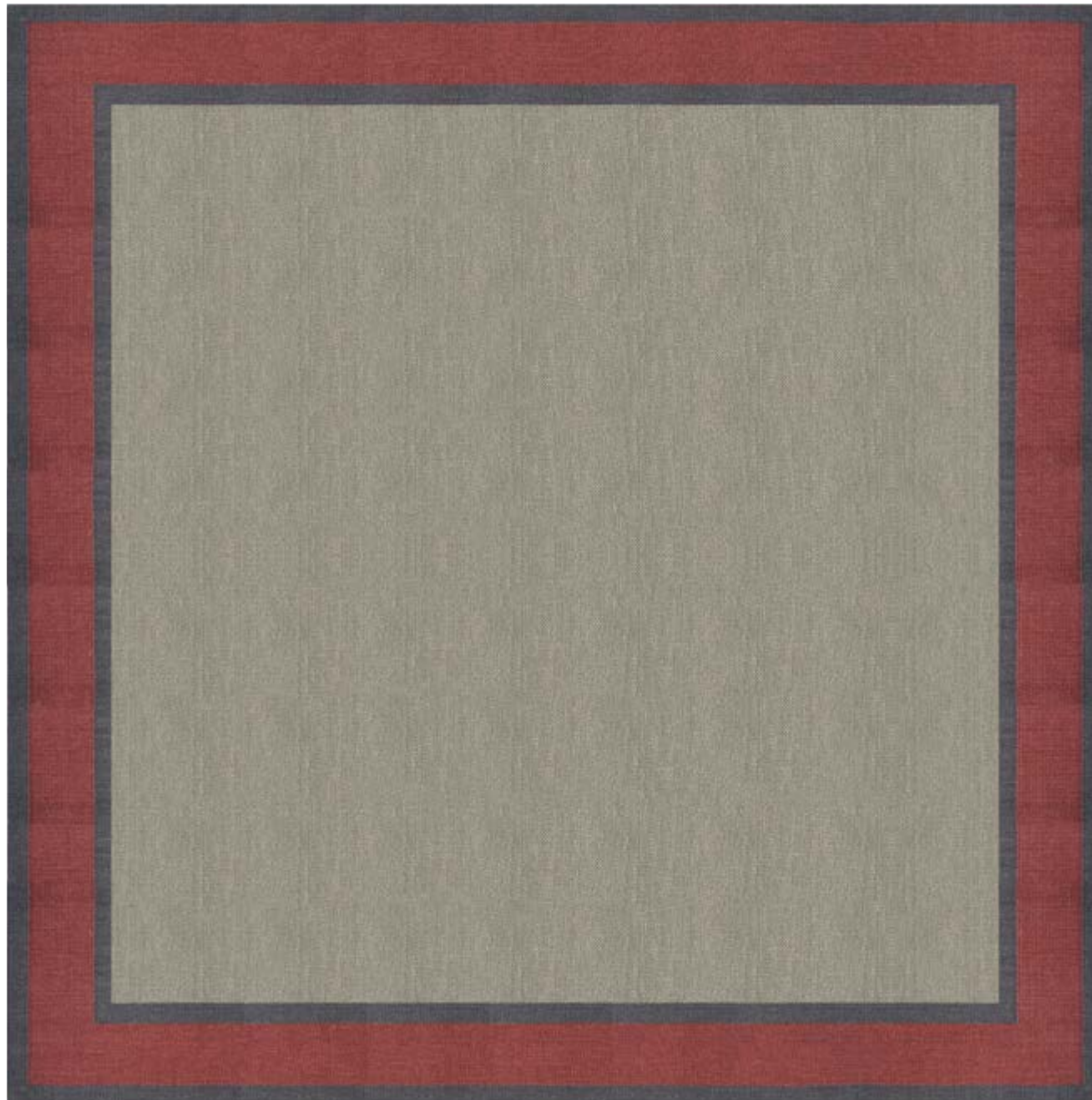
Pile height: flat

Tessitura: kilim tessuto a mano 

Weaving: hand woven kilim



KILIM QUADRO



1- Bordo 6 cm/ Border 6 cm - 2"

2- Fascia 18 cm/ Band 18 cm - 7"

3- Fascia 6 cm/ Band 6 cm - 2"

4- Fondo/ Ground

Colore / colour: su richiesta / on demand

Modifiche / variations: disegno / pattern

Composizione: 100% lana

Composition: 100% wool

Peso: 1840 g/m²

Weight: 1840 g/m² - 54 Oz/yd²

Misure max: 420x900 cm

Max size: 420x900 cm / 165x354"

Altezza pelo: piatto

Pile height: flat

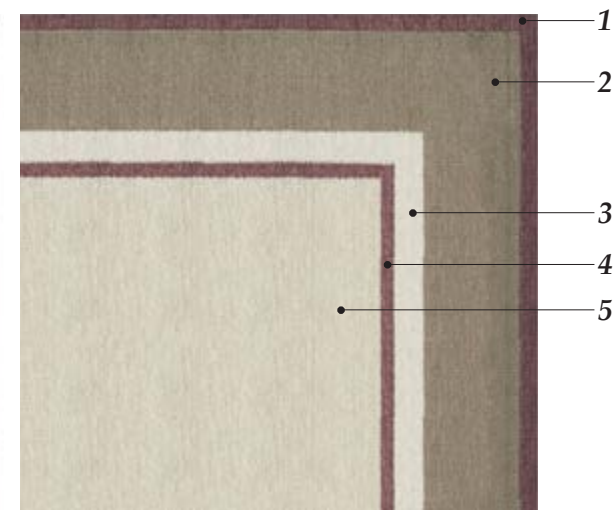
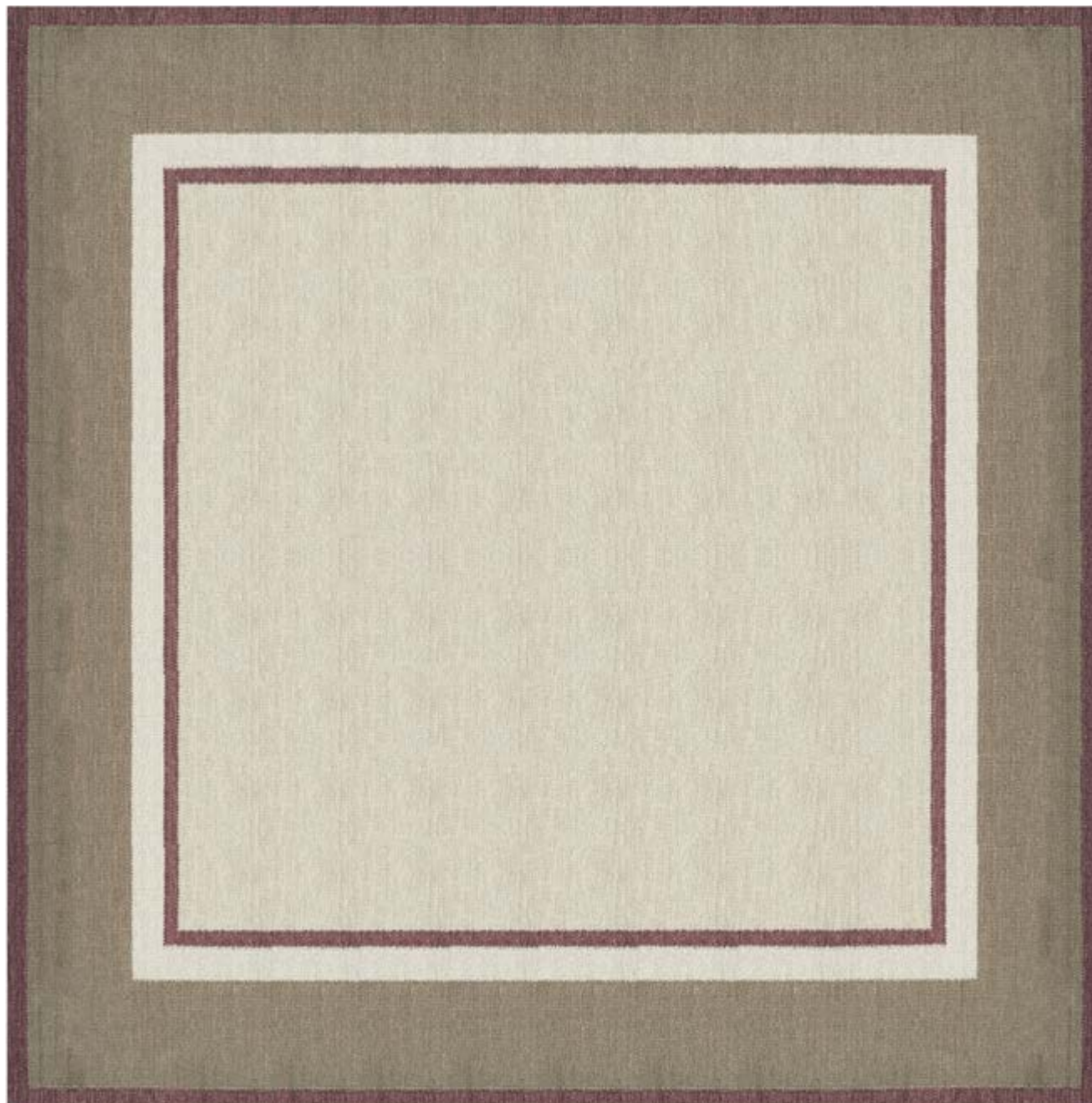
Tessitura: kilim tessuto a mano 

Weaving: hand woven kilim



* In foto il tappeto misura 200x200 cm - Carpet size 200x200 cm / 79"x79"

KILIM STAGIONI



- 1- Bordo 6 cm/ Border 6 cm - 2"
- 2- Fascia 25 cm/ Band 25 cm - 10"
- 3- Fascia 8 cm/ Band 8 cm - 3"
- 4- Fascia 3 cm/ Band 3 cm - 1"
- 5- Fondo/ Ground


Colore / colour: su richiesta / on demand
Modifiche / variations: disegno / pattern

Composizione: 100% lana
Composition: 100% wool

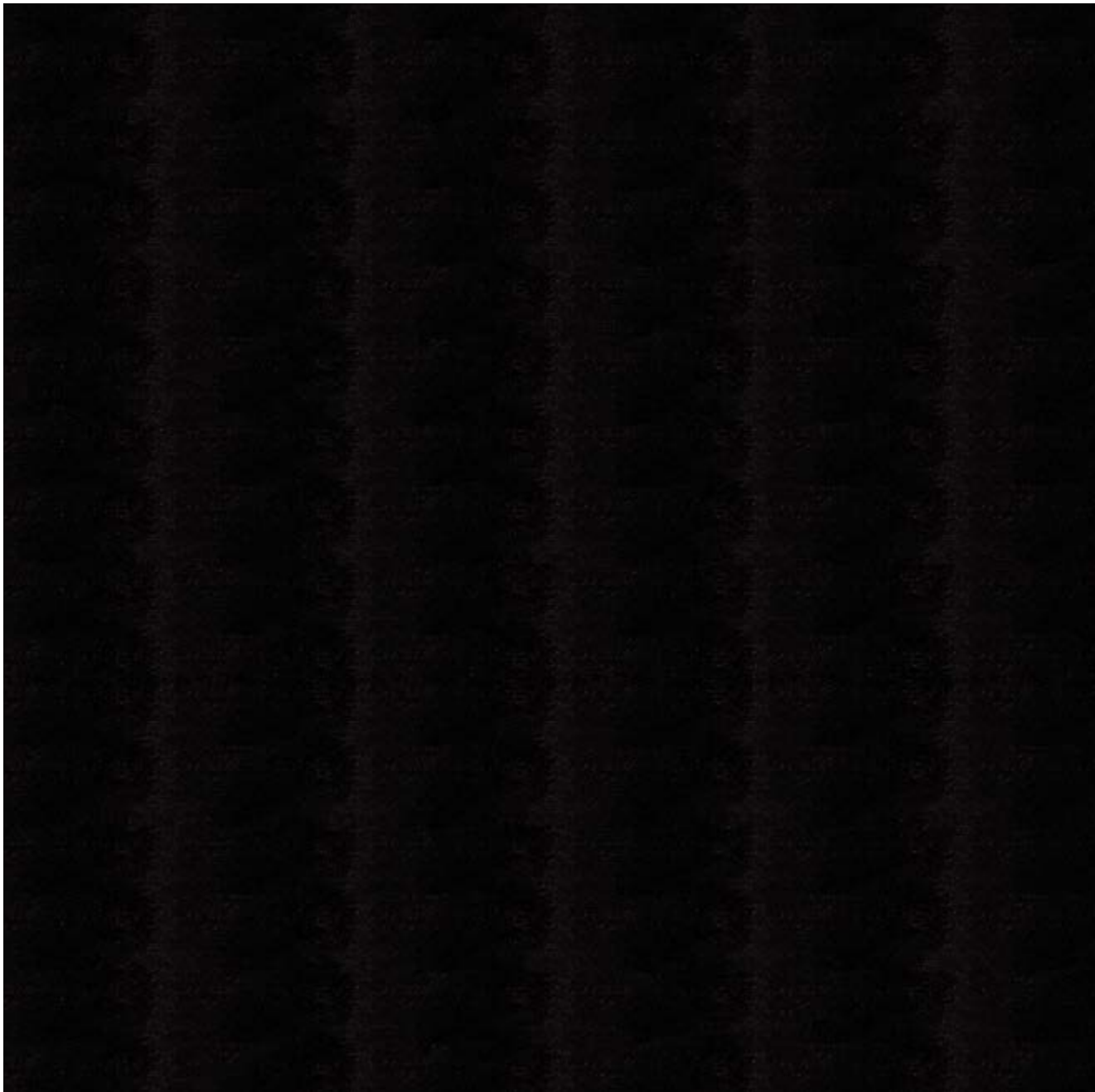
Peso: 1840 g/m²
Weight: 1840 g/m² - 54 Oz/yd²

Misure max: 420x900 cm
Max size: 420x900 cm / 165x354"

Altezza pelo: piatto
Pile height: flat

Tessitura: kilim tessuto a mano 
Weaving: hand woven kilim





Colore / colour: su richiesta / on demand
Modifiche / variations: disegno / pattern

Composizione: 100% mohair
Composition: 100% mohair

Peso: 4920 g/m²
Weight: 4920 g/m² - 145 Oz/yd²

Misure max: 480x900 cm
Max size: 480x900 cm / 189x354"

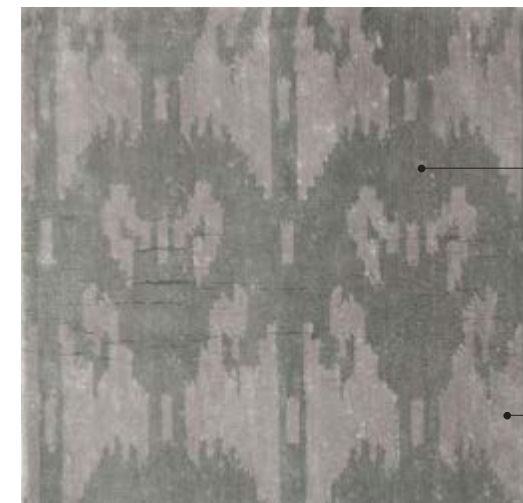
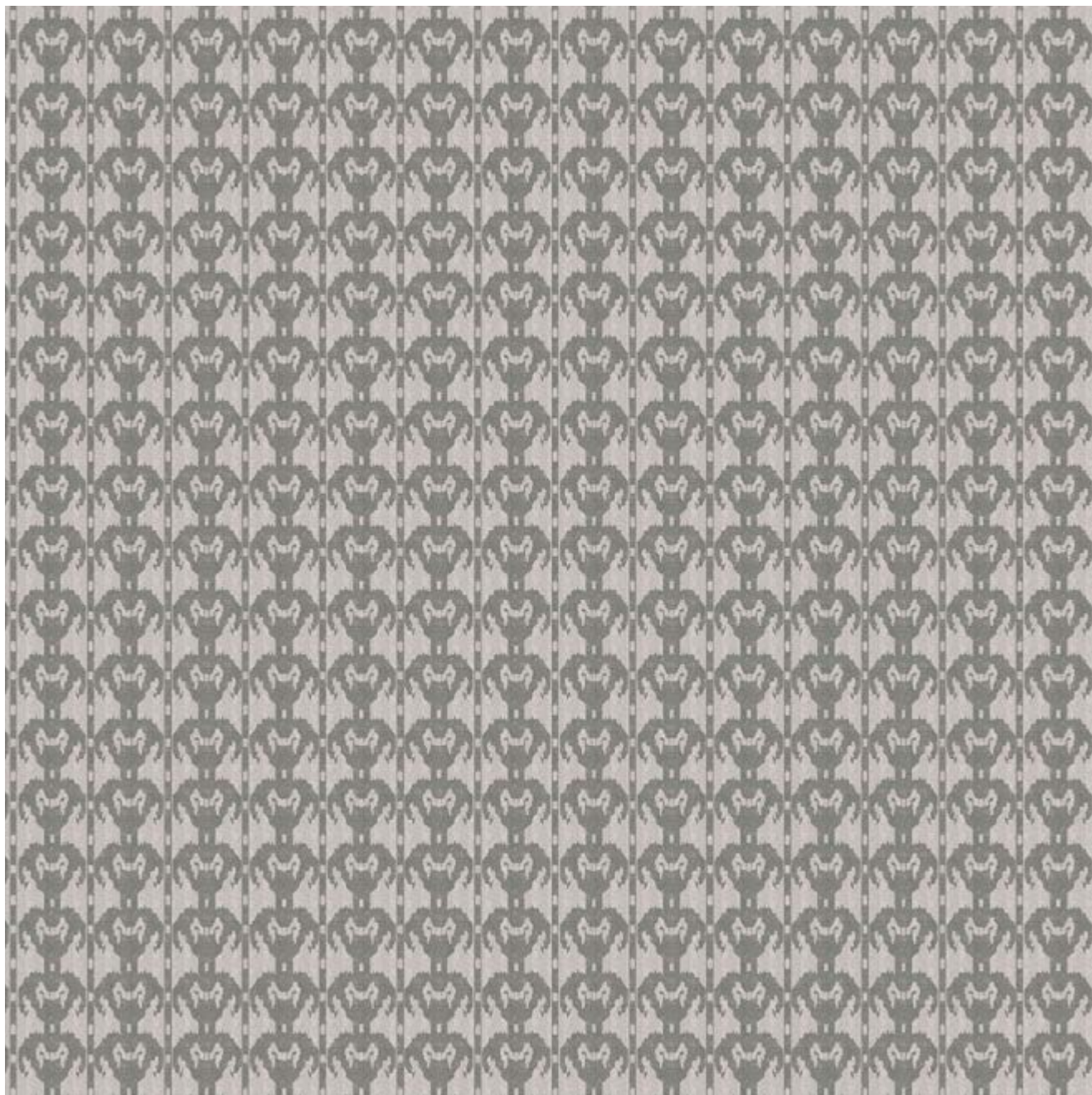
Altezza pelo: 1 cm
Pile height: 1 cm / 1/2"

Tessitura: annodato a mano
Weaving: hand knotted



* In foto il tappeto misura 200x200 cm - Carpet size 200x200 cm / 79"x79"

LING PIPISTRELLO



1- Decorazione/ Decoration
altezza/height 14 cm/6"

2- Fondo/ Ground

Colore/ colour: su richiesta / on demand
Modifiche/ variations: disegno / pattern

Composizione: 100% seta
Composition: 100% silk

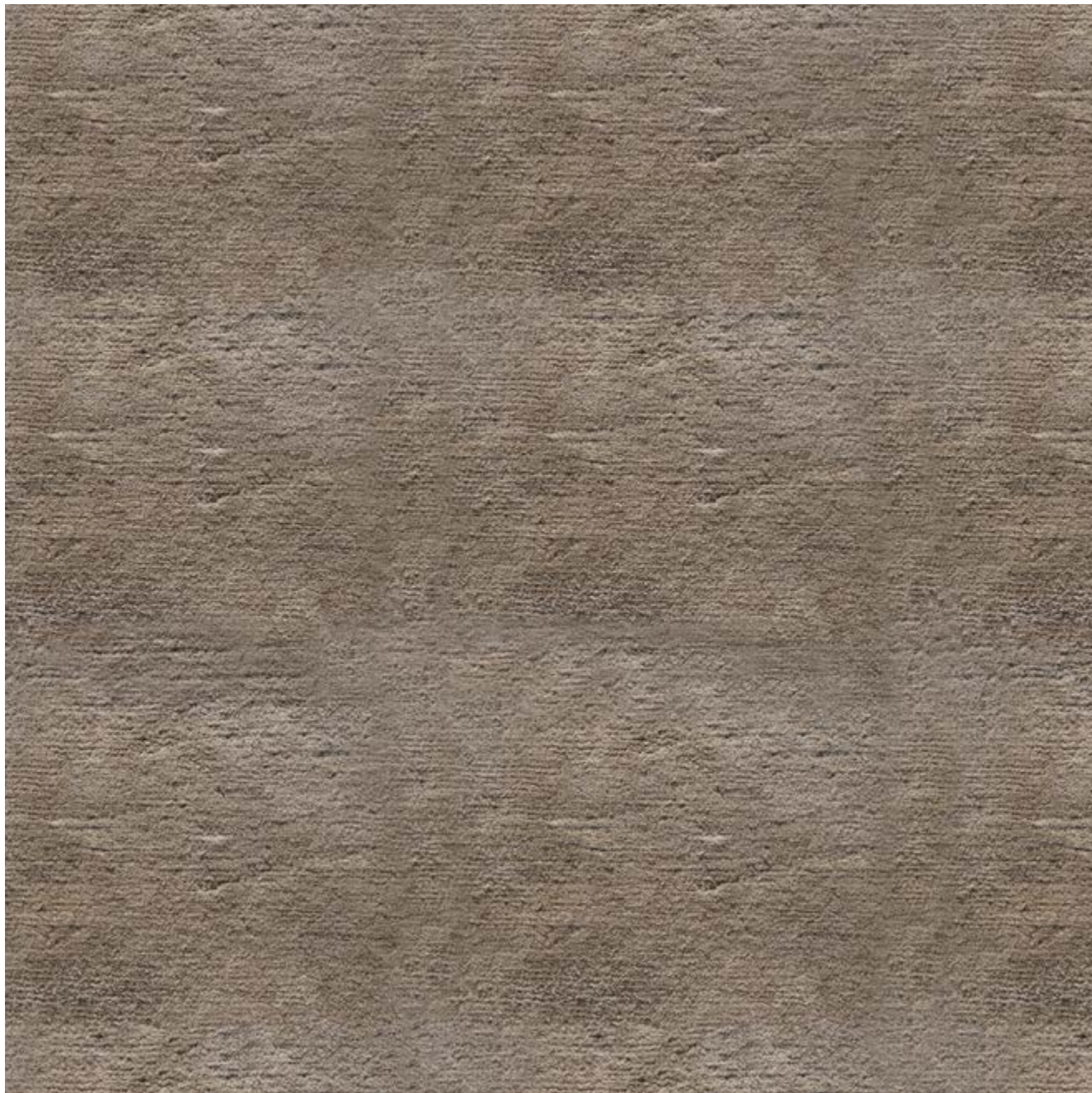
Peso: 3000 g/m²
Weight: 3000 g/m² - 105 Oz/yd²

Misure max: 420x900 cm
Max size: 420x900 cm / 165x354"

Altezza pelo: 1 cm
Pile height: 1 cm / 1/2"

Tessitura: annodato a mano 120.000 nodi
Weaving: hand knotted 120.000 knots





Colore / colour: su richiesta / on demand
Modifiche / variations: disegno / pattern

Composizione: 100% lino
Composition: 100% linen

Peso: 4720 g/m²
Weight: 4720 g/m² - 139 Oz/yd²

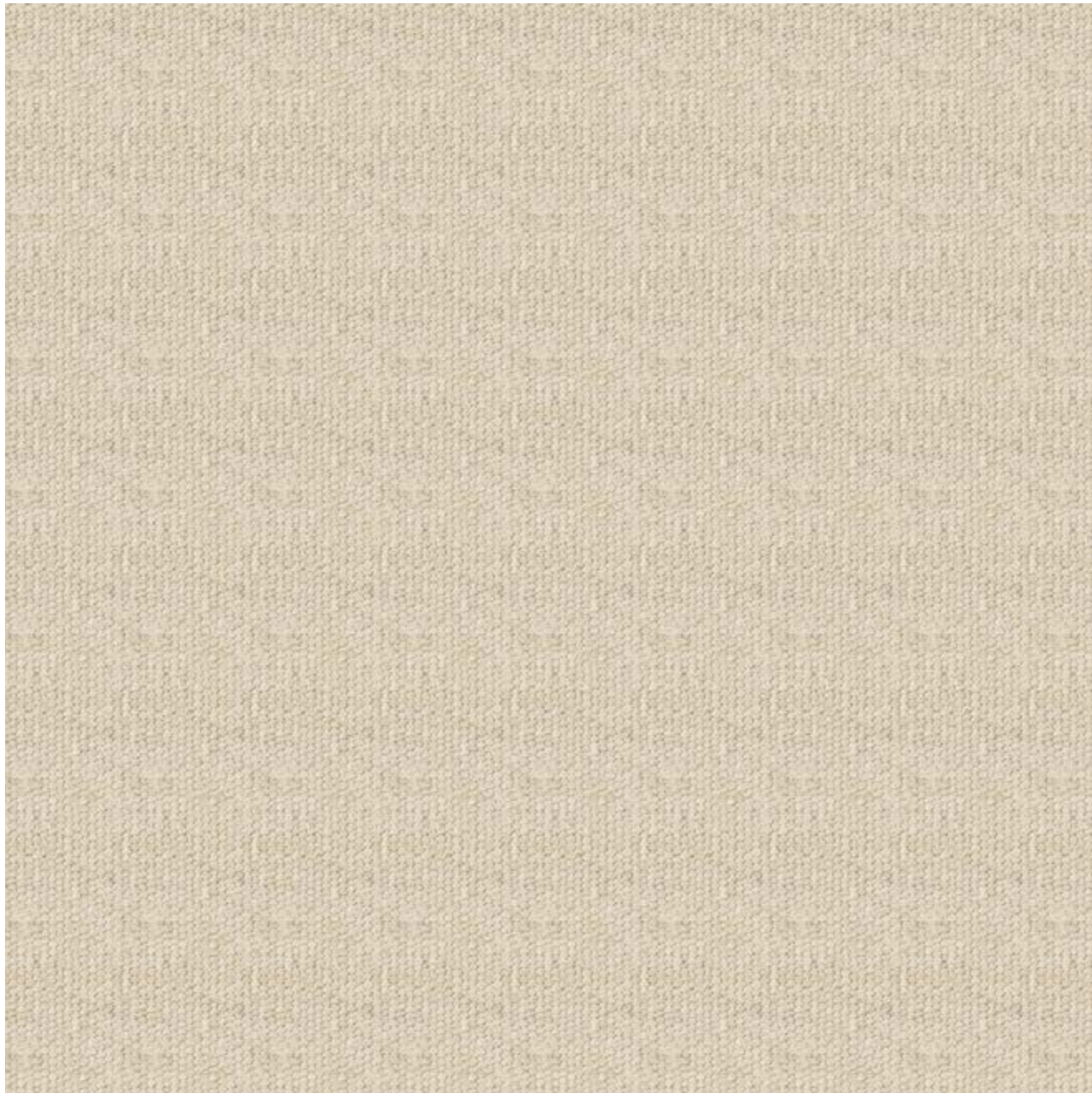
Misure max: 420x900 cm
Max size: 420x900 cm / 165x354"

Altezza pelo: 0,5
Pile height: 0,5 / 1/4"

Tessitura: annodato a mano
Weaving: hand knotted



* In foto il tappeto misura 200x200 cm - Carpet size 200x200 cm / 79"x79"



Colore: su richiesta
Colour: on demand

Composizione: 100% canapa
Composition: 100% hemp

Peso: 755 g/m²
Weight: 755 g/m² - 22 Oz/yd²

Misure max: 420x900 cm
Max size: 420x900 cm / 165x354"

Altezza pelo: piatto
Pile height: flat

Tessitura: tessuto a mano
Weaving: hand woven





Colore: su richiesta
Colour: on demand

Composizione: 100% mohair
Composition: 100% mohair

Peso: 5125 g/m²
Weight: 5125 g/m² - 151 Oz/yd²

Misure max: 480x900 cm
Max size: 480x900 cm / 189x354"

Altezza pelo: 3,5 cm
Pile height: 3,5 cm / 1-1/2"

Tessitura: annodato a mano
Weaving: hand knotted



* In foto il tappeto misura 200x200 cm - Carpet size 200x200 cm / 79"x79"



Colore/ colour: su richiesta / on demand
Modifiche/ variations: disegno / pattern

Composizione: 100% cashmere
Composition: 100% cashmere

Peso: 3800 g/m²
Weight: 3800 g/m² - 112 Oz/yd²

Misure max: 480x900 cm
Max size: 480x900 cm / 189x354"

Altezza pelo: 0,5 cm
Pile height: 0,5 cm / 1/4"

Tessitura: annodato a mano
Weaving: hand knotted



* In foto il tappeto misura 200x200 cm - Carpet size 200x200 cm / 79"x79"



Colore/ colour: su richiesta / on demand
Modifiche/ variations: disegno / pattern

Composizione: 100% seta
Composition: 100% silk

Peso: 6150 g/m²
Weight: 6150 g/m² - 181 Oz/yd²

Misure max: 480x900 cm
Max size: 480x900 cm / 189x354"

Altezza pelo: 2 cm
Pile height: 2 cm / 1"

Tessitura: annodato a mano
Weaving: hand knotted



* In foto il tappeto misura 200x200 cm - Carpet size 200x200 cm / 79"x79"



Colore / colour: su richiesta / on demand
Modifiche / variations: disegno / pattern

Composizione: 100% seta
Composition: 100% silk

Peso: 4280 g/m²
Weight: 4280 g/m² - 126 Oz/yd²

Misure max: 480x900 cm
Max size: 480x900 cm / 189x354"

Altezza pelo: 0,5 cm
Pile height: 0,5 cm / 1/4"

Tessitura: annodato a mano 100.000 nodi
Weaving: hand woven 100.000 knots



PLUTONE



Colore: su richiesta
Colour: on demand

Composizione: lana/lino
Composition: wool/linen

Peso: 1025 g/m²
Weight: 1025 g/m² - 30 Oz/yd²

Misure max: 420x900 cm
Max size: 420x900 cm / 165x354"

Altezza pelo: piatto
Pile height: flat

Tessitura: tessuto a mano
Weaving: hand woven



* In foto il tappeto misura 200x200 cm - Carpet size 200x200 cm / 79"x79"

POLARIS



Colore: su richiesta
Colour: on demand

Composizione: 100% lana
Composition: 100% wool

Peso: 1640 g/m²
Weight: 1640 g/m² - 42 Oz/yd²

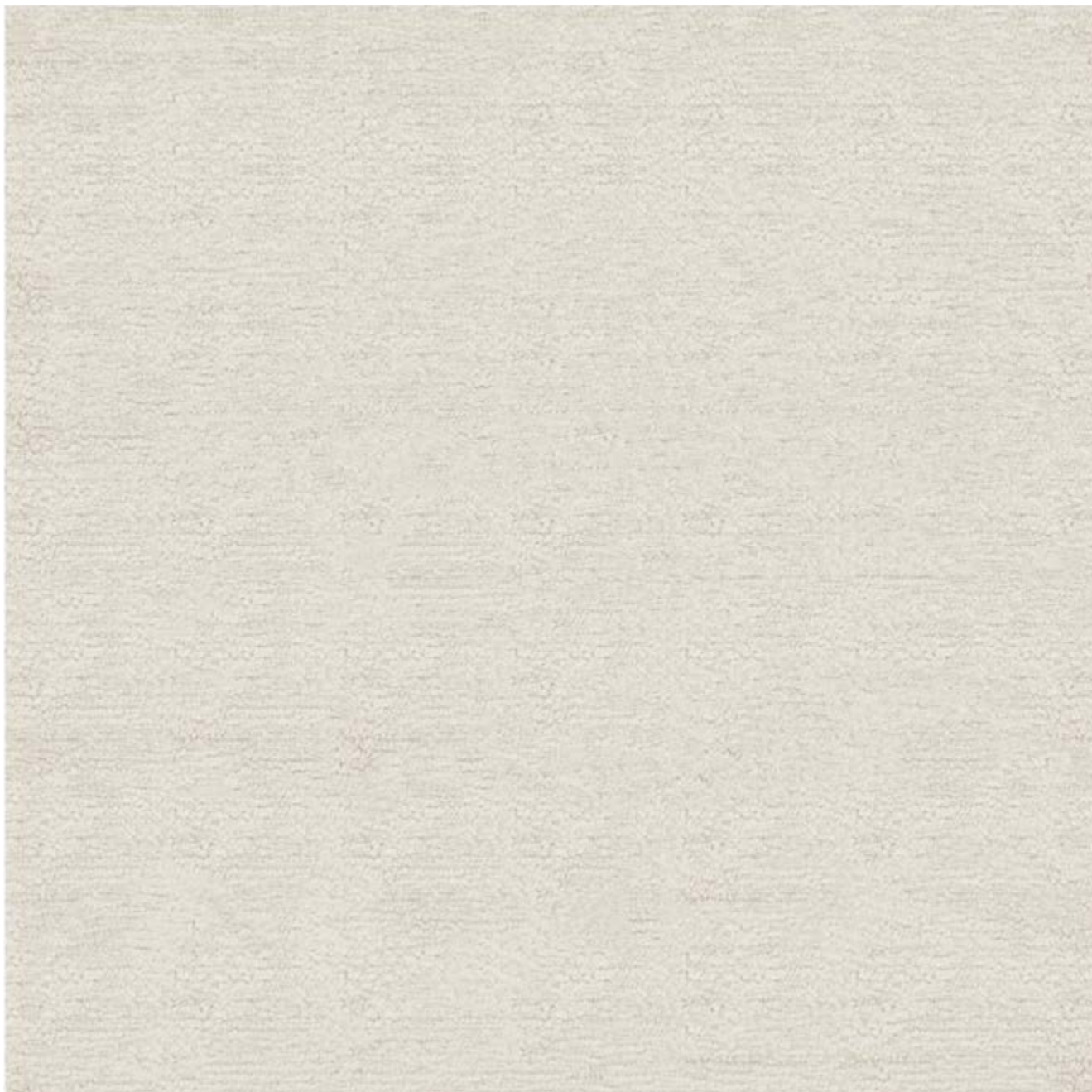
Misure max: 420x900 cm
Max size: 420x900 cm / 165x354"

Altezza pelo: piatto
Pile height: flat

Tessitura: tessuto a mano
Weaving: hand woven



* In foto il tappeto misura 200x200 cm - Carpet size 200x200 cm / 79"x79"



Colore / colour: su richiesta / on demand
Modifiche / variations: disegno / pattern

Composizione: 100% lana NZ
Composition: 100% NZ wool

Peso: 3080 g/m²
Weight: 3080 g/m² - 91 Oz/yd²

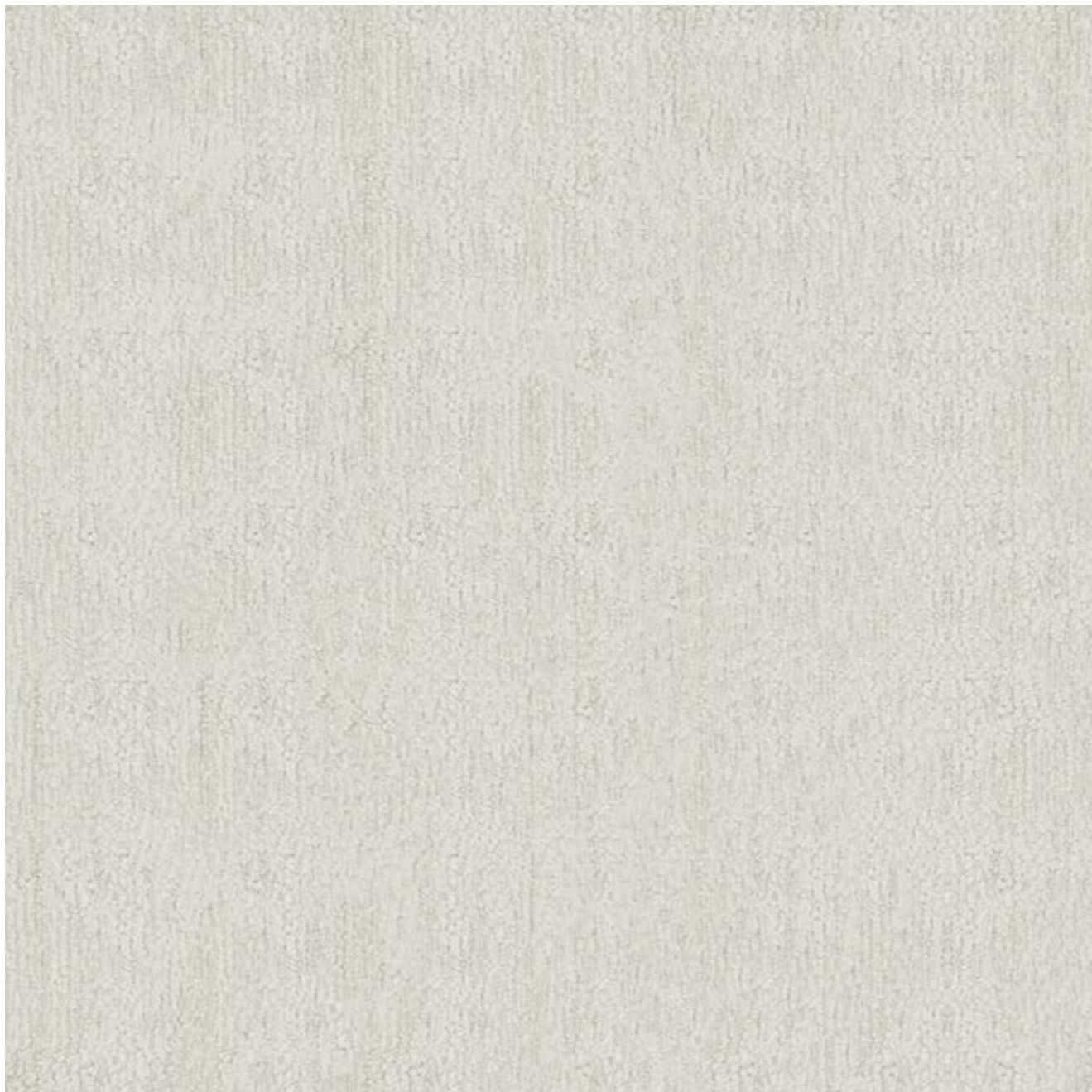
Misure max: 480x900 cm
Max size: 480x900 cm / 189x354"

Altezza pelo: 1,5 cm
Pile height: 1,5 cm / 1/2"

Tessitura: annodato a mano
Weaving: hand knotted



* In foto il tappeto misura 200x200 cm - Carpet size 200x200 cm / 79"x79"



Colore / colour: su richiesta / on demand
Modifiche / variations: disegno / pattern

Composizione: 100% cashmere
Composition: 100% cashmere

Peso: 2760 g/m²
Weight: 2760 g/m² - 81 Oz/yd²

Misure max: 480x900 cm
Max size: 480x900 cm / 189x354"

Altezza pelo: 2 cm
Pile height: 2 cm / 1"

Tessitura: annodato a mano
Weaving: hand knotted



* In foto il tappeto misura 200x200 cm - Carpet size 200x200 cm / 79"x79"

BORDI COTONE OUTDOOR

Misura bordi standard in cotone: 6 cm.

BORDI IN PELLE DISPONIBILI SU RICHIESTA

Misura bordi standard in pelle : 6 cm.

SI POSSONO APPLICARE TESSUTI DI COLLEZIONE C&C MILANO

Dimensione del bordo : altezza 6 cm.

Il prezzo sarà definito nella fase di offerta.

INFORMAZIONI TECNICHE

Resistenza all'acqua : 4-5

Resistenza alla luce : 5-6

L'altezza massima del tappeto è di 400 cm.

Non è possibile realizzare giunte.

ISTRUZIONI PER LA MANUTENZIONE

Lavare il tappeto in piano con acqua tiepida e sapone neutro, lasciarlo asciugare orizzontalmente.

L'utilizzo di candeggina non è raccomandato.

Raccomandiamo di lavare il tappeto solo in lavanderie professionali.

Pulire regolarmente il tappeto per prevenire accumoli di sporco; aspirare alla potenza media, passando gentilmente sui bordi per non indebolire la fibra; non usare il battipanni, non usare detergenti per tappeti.

Non tirare i fili sciolti , tagliarli con le forbici.

In caso di piccole macchie, si consiglia di tamponare con un panno pulito, e successivamente immerso nell'acqua tiepida e sapone neutro.

Si consiglia di consultare sempre la lavanderia prima di far lavare a secco il tappeto.

Trattandosi dei tappeti realizzati su misura, le dimensioni, le proporzioni di disegno e il tono dei colori possono avere una variabilità del 10% da un tappeto all'altro, questa è una caratteristica preziosa perché attesta l'originalità della produzione.

COTTON OUTDOOR BORDERS

Cotton outdoor borders size: 6 cm.

LEATHER OUTDOOR BORDERS AVAILABLE ON REQUEST

Leather outdoor standard size border : 6 cm.

C&C FABRICS'S BORDERS AVAILABLE ON REQUEST

Standard size borders : width 6 cm.

Price to be quoted

TECHNICAL INFORMATION

Water resistance : 4-5

Light fastness : 5-6

The maximum width of the rug is 400 cm.

It is not possible to make joints.

CARE INSTRUCTIONS

Wash the carpet laying flat with lukewarm water and mild soap, let it dry horizontally.

Use of bleach is not recommended.

We recommend only that you use a professional laundry service.

Clean your carpet regularly to prevent stack accumulation of dirt; vacuum at medium power with smooth nozzle, act gently on borders not to weaken the fibers; do not use carpet cleaner.

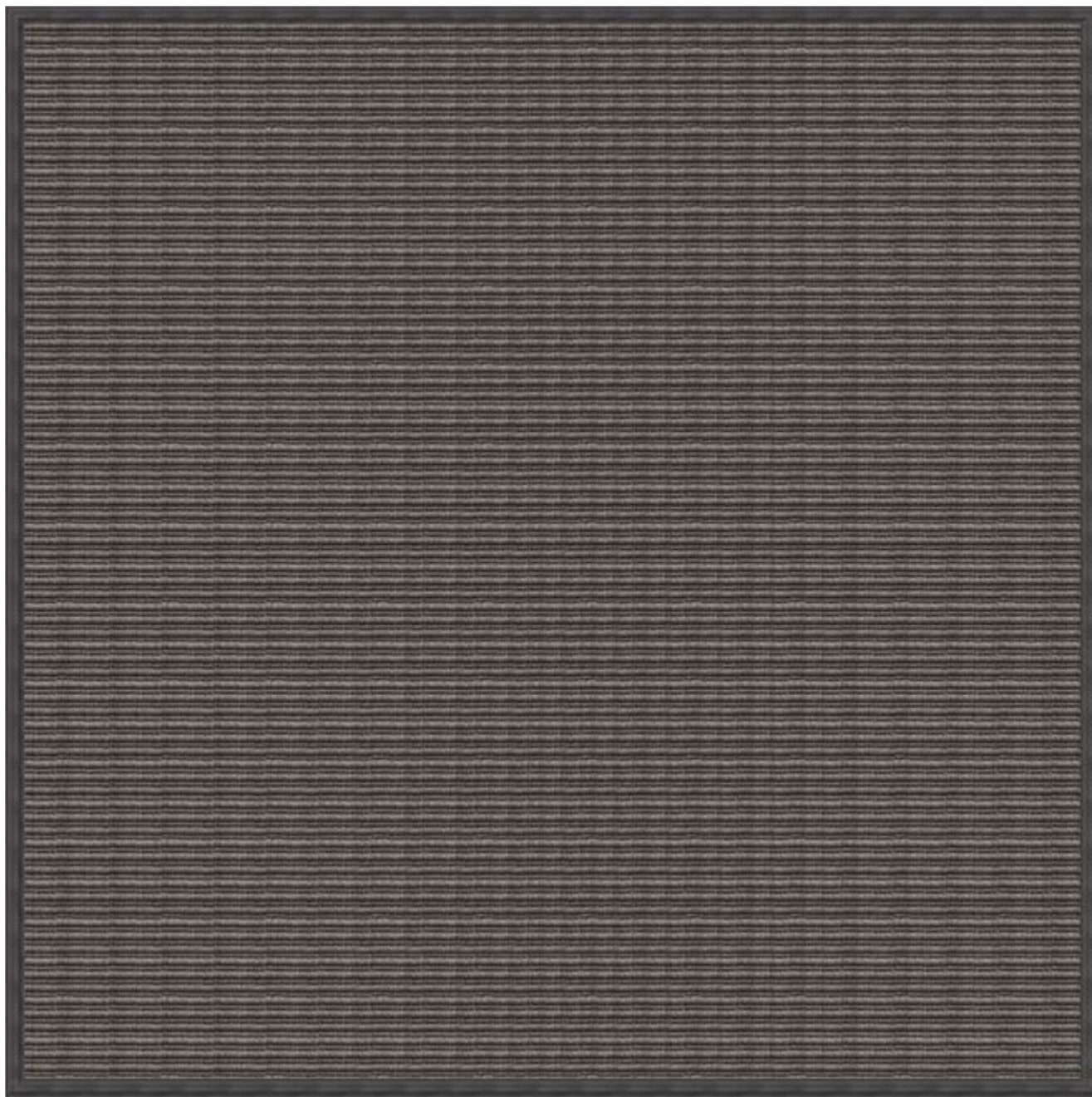
Do not pull loose threads, cut them off with scissors.

In case of limited stains, dirt can be immediately wiped with a clean rag before soaking with warm water and mild soap.

Always check with your dry cleaner-service before attempting to clean by yourself.

Since the carpets are custom made, size, drawing proportions and colour shade can have a variability of 10% from a carpet to another, this is a precious feature because attests the originality of the manufacturing and are part of the natural beauty.

CALLIOPE *con bordo cotone 6 cm - with cotton border 6 cm - 2,3"* (disponibile con bordo filo - available with serged border)



Bordo filo/serged border



Calliope taupe



Calliope paglia/straw

Colore: marmo
Colour: marble

Composizione: 100% polipropilene
Composition: 100% polypropylene

Peso: 1800 g/m²
Weight: 1800 g/m² - 53 Oz/yd²

Misure max: 400x900 cm
Max size: 400x900 cm / 157x354"

Altezza pelo: piatto
Pile height: flat

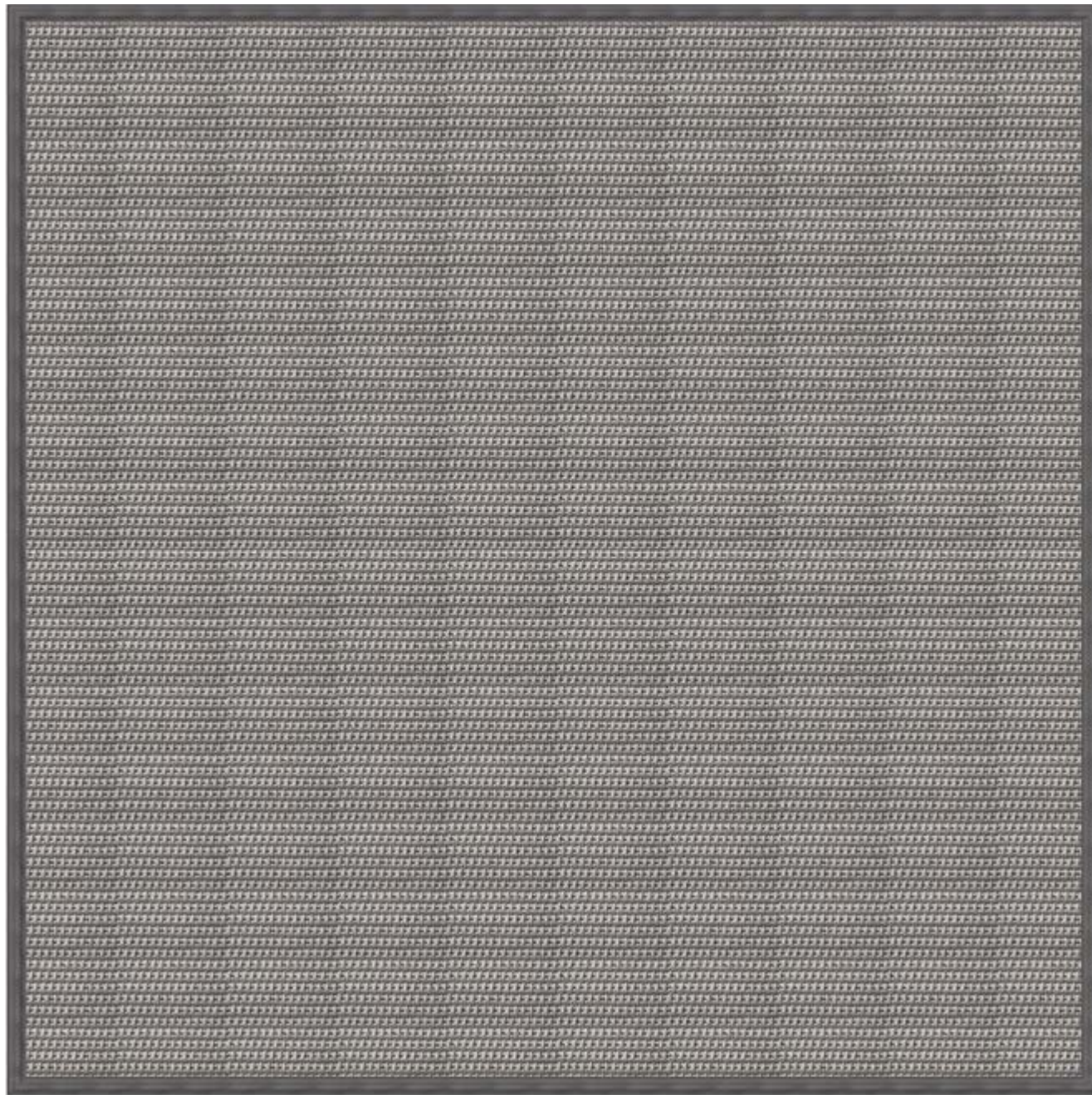
Tessitura: tessitura piatta
Weaving: flatweave



Bordo cotone/cotton border

* In foto il tappeto misura 200x200 cm - Carpet size 200x200 cm / 79"x79"

GALATEA con bordo cotone 6 cm - with cotton border 6 cm - 2,3" (disponibile con bordo filo - available with serged border)



Bordo filo/serged border

Colore: perla
Colour: pearl

Composizione: 100% polipropilene
Composition: 100% polypropylene

Peso: 2010 g/m²
Weight: 2010 g/m² - 59 Oz/yd²

Misure max: 400x900 cm
Max size: 400x900 cm / 157x354"

Altezza pelo: piatto
Pile height: flat

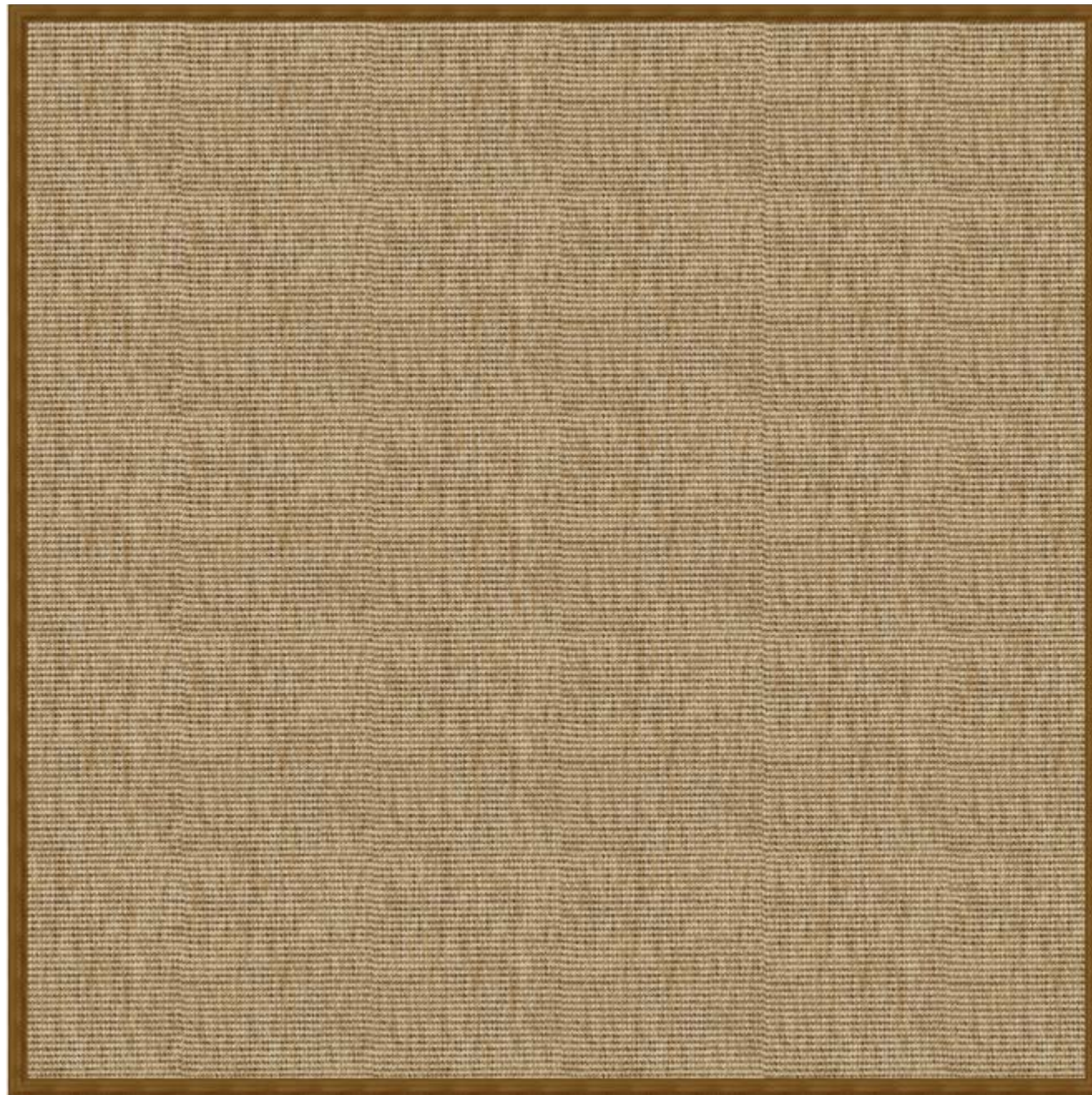
Tessitura: tessitura piatta
Weaving: flatweave



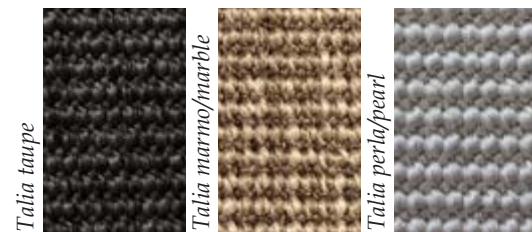
Bordo cotone/cotton border

* In foto il tappeto misura 200x200 cm - Carpet size 200x200 cm / 79"x79"

TALIA con bordo cotone 6 cm - with cotton border 6 cm - 2,3" (disponibile con bordo filo - available with serged border)



Bordo filo/serged border



Talia taupe

Talia marmo/marble

Talia perla/pearl

Colore: paglia
Colour: straw

Composizione: 100% polipropilene
Composition: 100% polypropylene

Peso: 1590 g/m²
Weight: 1590 g/m² - 47 Oz/yd²

Misure max: 400x900 cm
Max size: 400x900 cm / 157x354"

Altezza pelo: piatto
Pile height: flat

Tessitura: tessitura piatta
Weaving: flatweave



Bordo cotone/cotton border

IN & OUT DOOR

POLYPROPYLENE

INFORMAZIONI TECNICHE

Resistenza all'acqua : 4-5

Resistenza alla luce : 5-6

L'altezza massima del tappeto è di 400 cm.

Non è possibile realizzare giunte.

ISTRUZIONI PER LA MANUTENZIONE

Lavare il tappeto in piano con acqua tiepida e sapone neutro, lasciarlo asciugare orizzontalmente.

L'utilizzo di candeggina non è raccomandato.

Raccomandiamo di lavare il tappeto solo in lavanderie professionali.

Pulire regolarmente il tappeto per prevenire accumoli di sporco; aspirare alla potenza media, passando gentilmente sui bordi per non indebolire la fibra; non usare il battipanni, non usare detergenti per tappeti.

Non tirare i fili sciolti, tagliarli con le forbici.

In caso di piccole macchie, si consiglia di tamponare con un panno pulito, e successivamente immerso nell'acqua tiepida e sapone neutro.

Si consiglia di consultare sempre la lavanderia prima di far lavare a secco il tappeto.

Poiché i tappeti sono fatti a mano, le dimensioni, le proporzioni di disegno e il tono dei colori possono avere una variabilità del 10% da un tappeto all'altro, questa è una caratteristica preziosa perché attesta l'originalità della produzione e fa parte della bellezza naturale.

TECHNICAL INFORMATION

Water resistance : 4-5

Light fastness : 5-6

The maximum width of the rug is 400 cm.

It is not possible to make joints.

CARE INSTRUCTIONS

Wash the carpet laying flat with lukewarm water and mild soap, let it dry horizontally.

Do not bleach.

We recommend only that you use a professional laundry service.

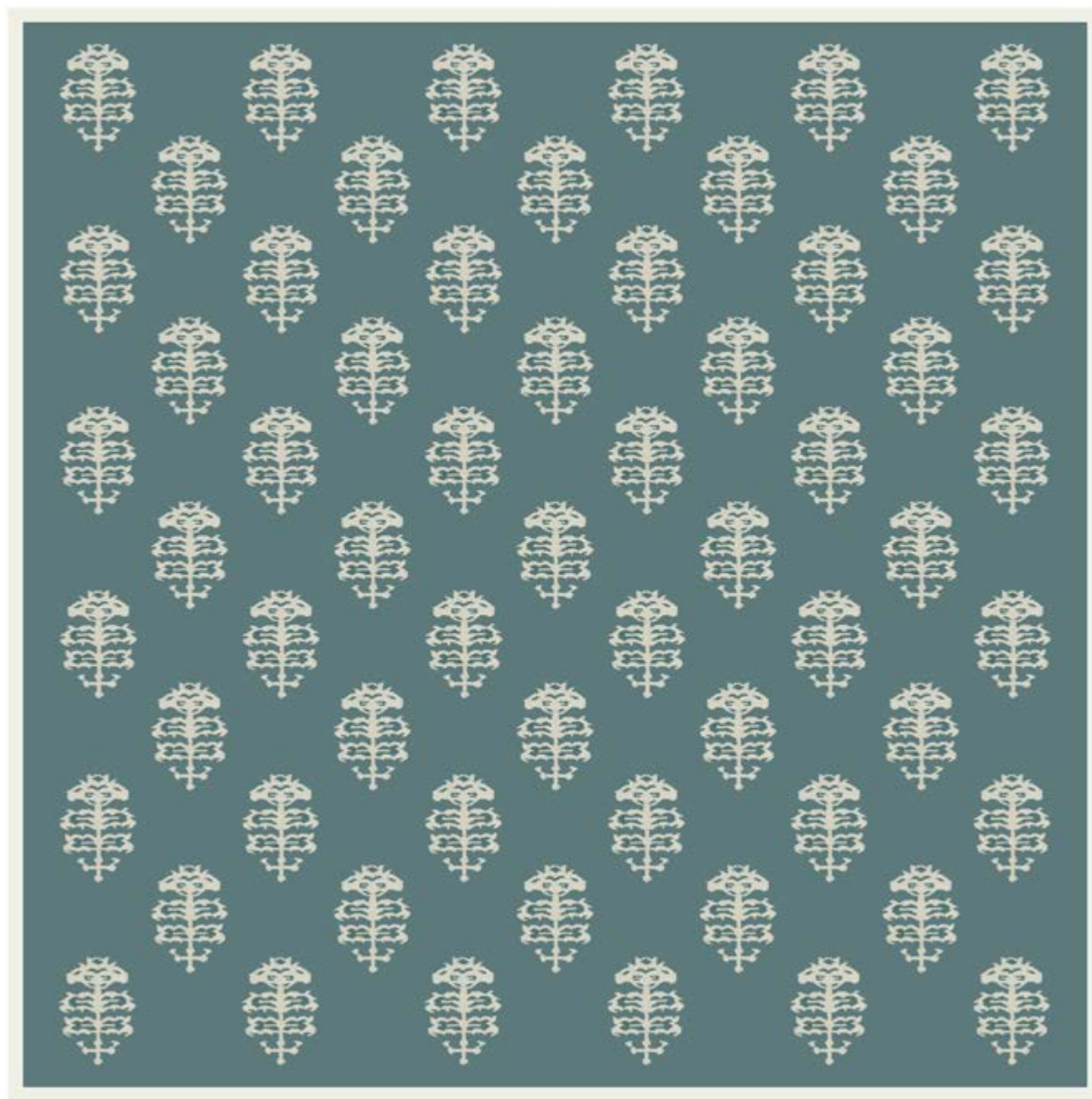
Clean your carpet regularly to prevent stack accumulation of dirt; vacuum at medium power with smooth nozzle, act gently on borders not to weaken the fibers; do not use carpet cleaner.

Do not pull loose threads, cut them off with scissors.

In case of limited stains, dirt can be immediately wiped with a clean rag before soaking with warm water and mild soap.

Always check with your dry cleaner-service before attempting to clean by yourself.

Since the carpets are custom made, size, drawing proportions and colour shade can have a variability of 10% from a carpet to another, this is a precious feature because attests the originality of the manufacturing and are part of the natural beauty.



Colore: su richiesta
Colour: on demand

Composizione: poliestere riciclato
Composition: recycled polyester

Peso: 1640 g/m²
Weight: 1640 g/m² - 48 Oz/yd²

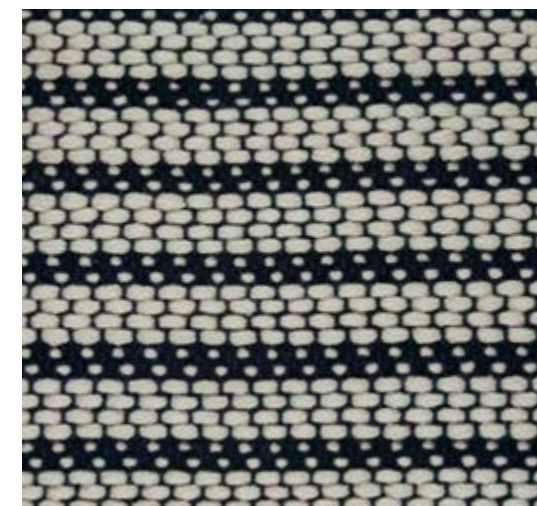
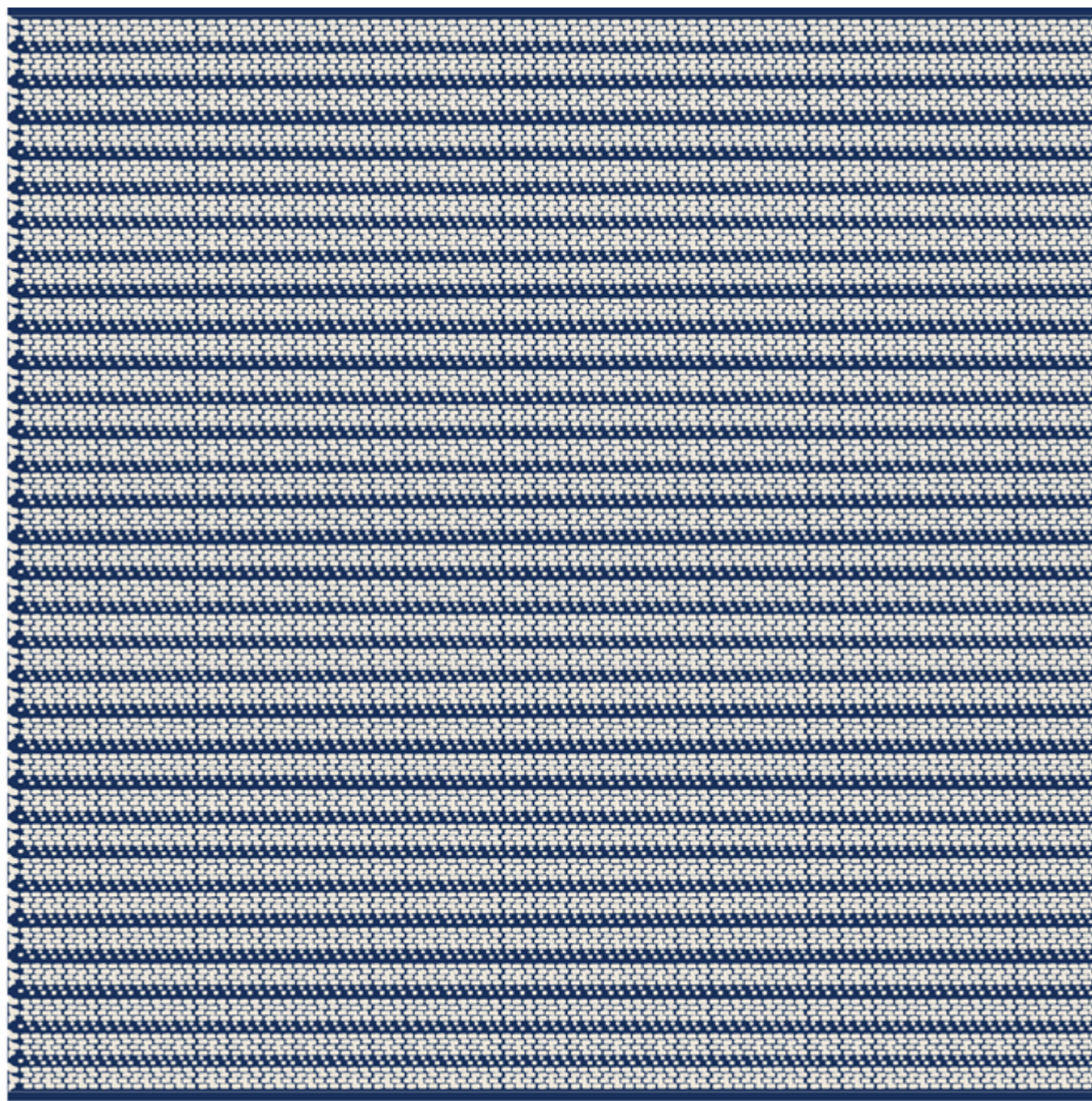
Misure max: 420x900 cm
Max size: 420x900 cm / 165x354"

Altezza pelo: piatto
Pile height: flat

Tessitura: tessuto a mano
Weaving: hand woven



ADIGE



Colore: su richiesta
Colour: on demand

Composizione: poliestere riciclato
Composition: recycled polyester

Peso: 2260 g/m²
Weight: 2260 g/m² - 67 Oz/yd²

Misure max: 420x900 cm
Max size: 420x900 cm / 165x354"

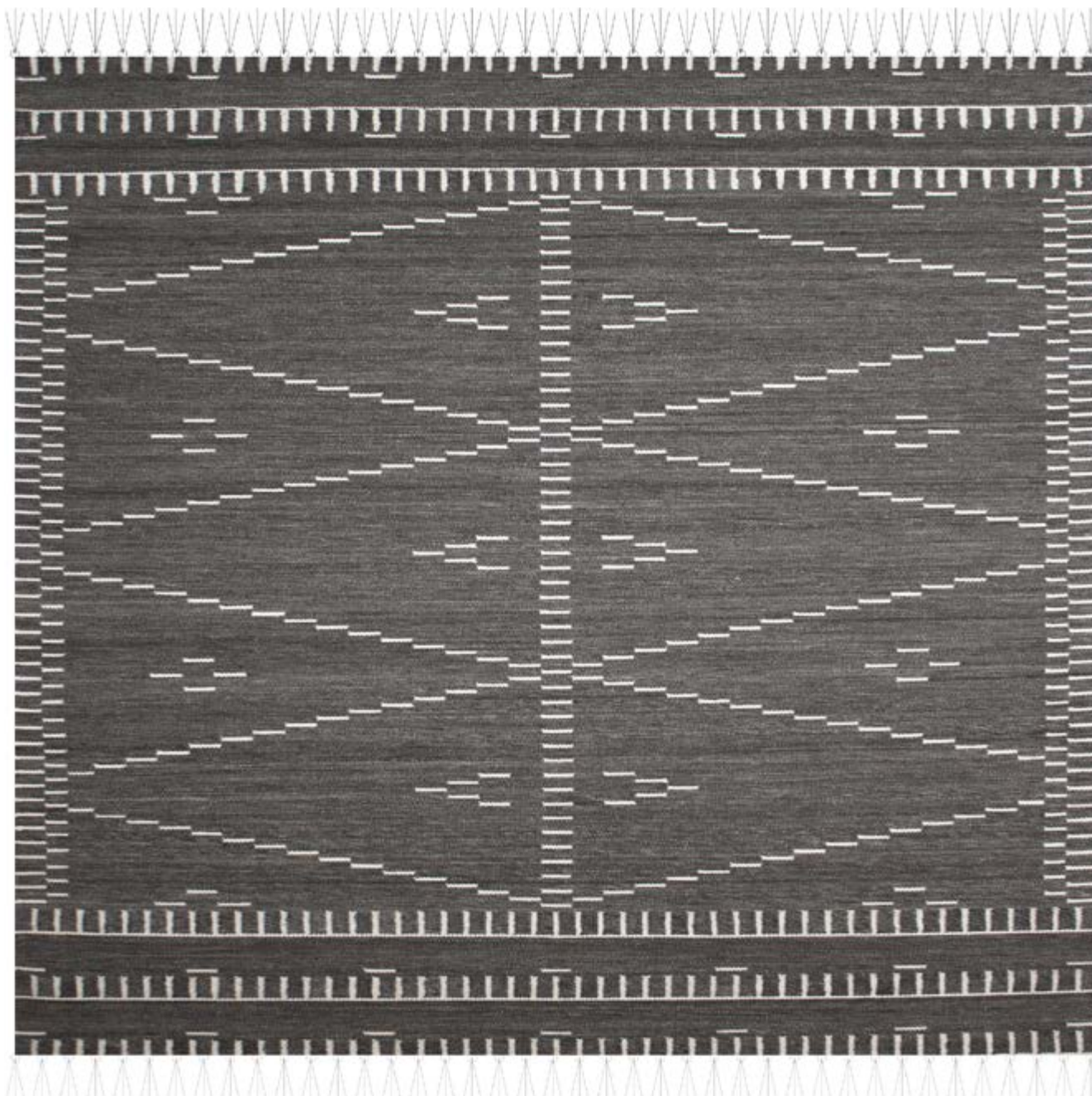
Altezza pelo: piatto
Pile height: flat

Tessitura: tessuto a mano
Weaving: hand woven



* In foto il tappeto misura 200x200 cm - Carpet size 200x200 cm / 79"x79"

ARNO



Colore: su richiesta
Colour: on demand

Composizione: poliestere riciclato
Composition: recycled polyester

Peso: 2050 g/m²
Weight: 2050 g/m² - 60 Oz/yd²

Misure max: 420x900 cm
Max size: 420x900 cm / 165x354"

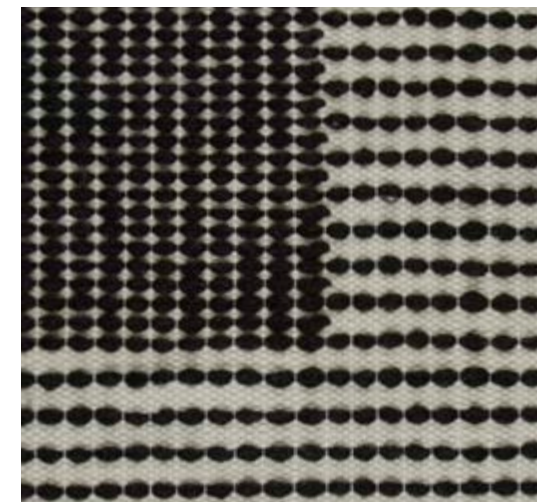
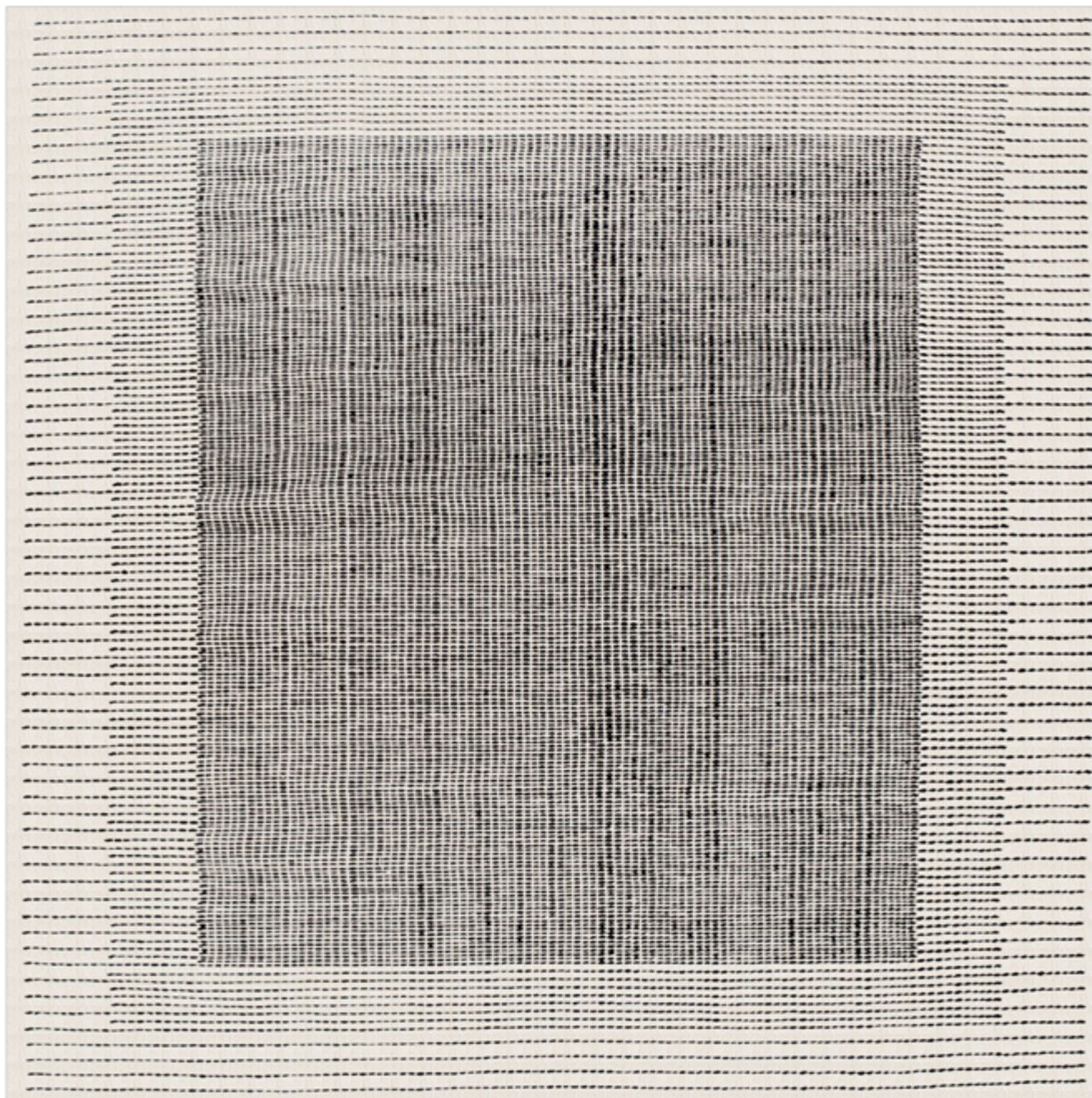
Altezza pelo: piatto
Pile height: flat

Tessitura: tessuto a mano
Weaving: hand woven



* In foto il tappeto misura 200x200 cm - Carpet size 200x200 cm / 79"x79"

PO 



Colore: su richiesta
Colour: on demand

Composizione: poliestere riciclato
Composition: recycled polyester

Peso: 2050 g/m²
Weight: 2050 g/m² - 60 Oz/yd²

Misure max: 420x900 cm
Max size: 420x900 cm / 165x354"

Altezza pelo: piatto
Pile height: flat

Tessitura: tessuto a mano
Weaving: hand woven



* In foto il tappeto misura 200x200 cm - Carpet size 200x200 cm / 79"x79"

IN & OUT DOOR



RECYCLED POLYESTER



Colore: su richiesta
Colour: on demand

Composizione: poliestere riciclato
Composition: recycled polyester

Peso: 2670 g/m²
Weight: 2670 g/m² - 79 Oz/yd²

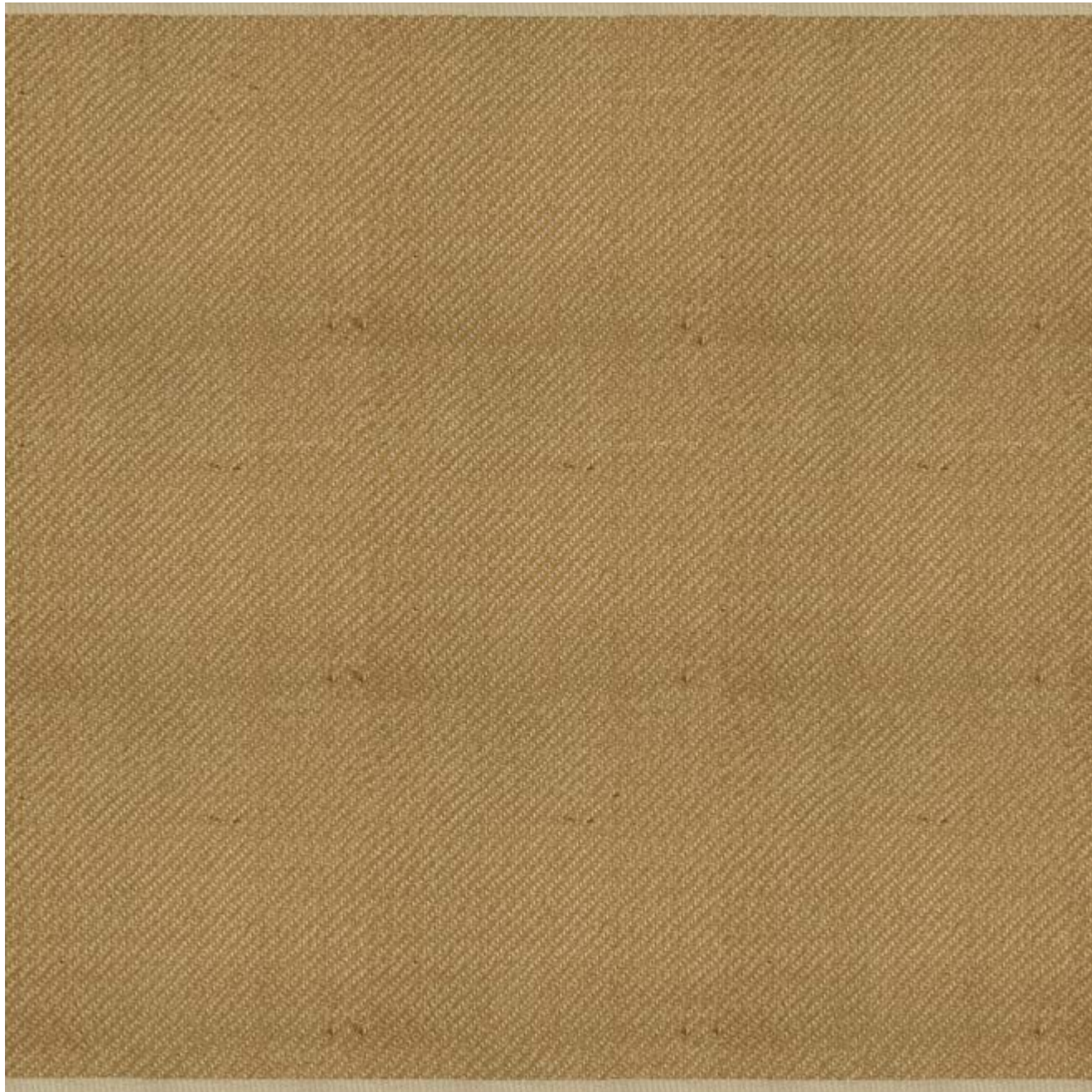
Misure max: 420x900 cm
Max size: 420x900 cm / 165x354"

Altezza pelo: 3 cm
Pile height: 3 cm / 2"

Tessitura: tessuto a mano
Weaving: hand woven



TEVERE



Colore: su richiesta
Colour: on demand

Composizione: poliestere riciclato
Composition: recycled polyester

Peso: 3080 g/m²
Weight: 3080 g/m² - 91 Oz/yd²

Misure max: 420x900 cm
Max size: 420x900 cm / 165x354"

Altezza pelo: piatto
Pile height: flat

Tessitura: tessuto a mano
Weaving: hand woven



* In foto il tappeto misura 200x200 cm - Carpet size 200x200 cm / 79"x79"

Si possono verificare lievi differenze di colore tra un lotto e l'altro
Slight color differences between one batch and another might occur

I colori in digitale potrebbero essere diversi da quelli reali, verificare sempre con la cartella colore in essere
The colours shown here may vary in respect to the real ones. Please make sure to check with the colour card

CARPETS COLOUR CARD



020/ARS 001



019/ARS 061



018/ARS 008



017/ARS 107



016/ARS 222



015/ARS 184



014/ARS 185



013/ARS 147



012/ARS 186



011/ARS 146



040/ARS 005



039/ARS 006



038/ARS 141



037/ARS 004



036/ARS 161



035/ARS 048



034/ARS 127



033/ARS 029



032/ARS 010



031/ARS 030



060/ARS 022



059/ARS 026



058/ARS 028



057/ARS 070



056/ARS 108



055/ARS 203



054/ARS 110



053/ARS 265



052/ARS 261



051/ARS 168



080/ARS 045



079/ARS 288



078/ARS 268



077/ARS 267



076/ARS 246



075/ARS 287



074/ARS 245



073/ARS 283



072/ARS 210



071/ARS 284



100/ARS 333



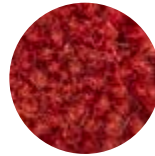
099/ARS 289



098/ARS 248



097/ARS 229



096/ARS 230



095/ARS 036



094/ARS 249



093/ARS 112

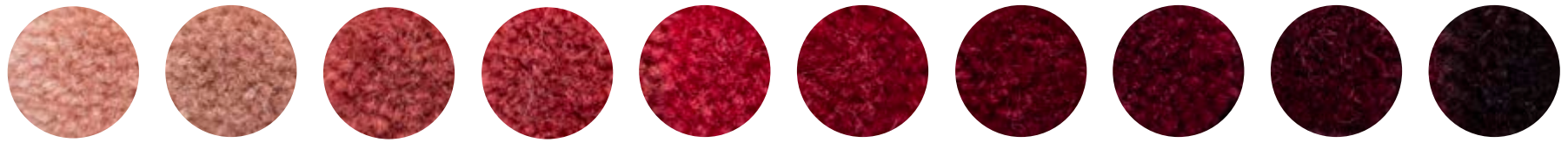


092/ARS 092

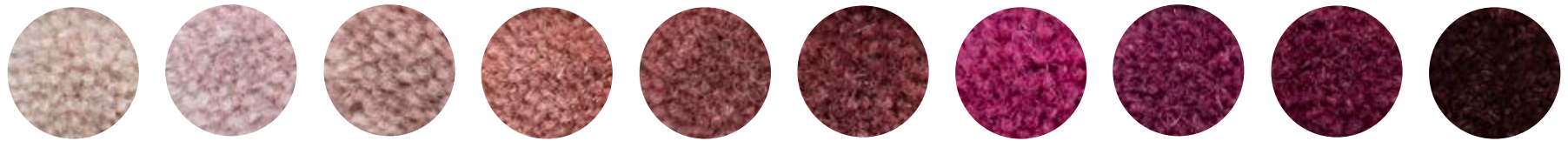


091/ARS 011

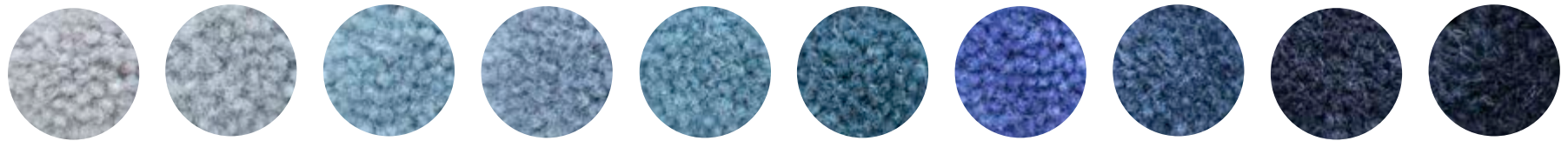
*Codes in red correspond to ARS Color
Codes in Black correspond to C&C Milano Color*



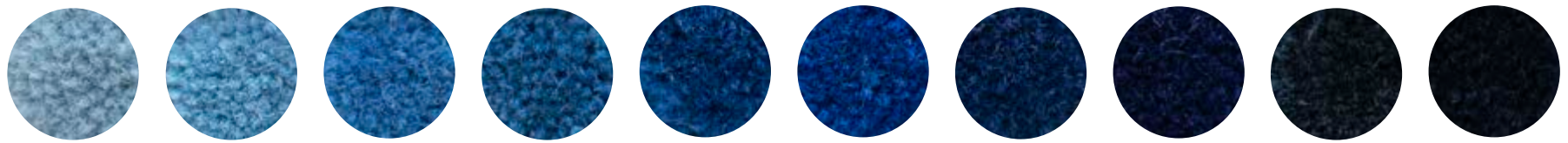
120/ARS 191 119/ARS 097 118/ARS 095 117/ARS 018 116/ARS 076 115/ARS 037 114/ARS 111 113/ARS 074 112/ARS 034 111/ARS 033



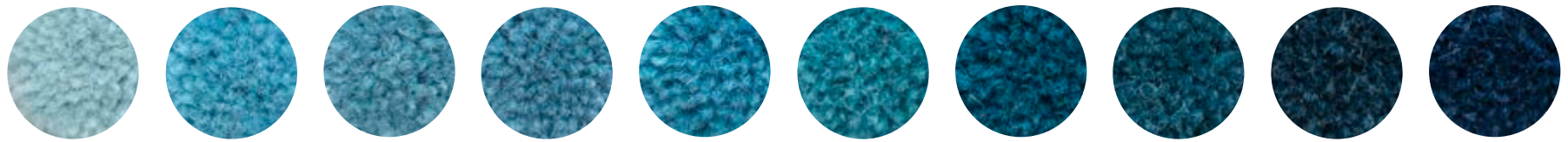
140/ARS 007 139/ARS 192 138/ARS 150 137/ARS 169 136/ARS 133 135/ARS 151 134/ARS 040 133/ARS 134 132/ARS 015 131/ARS 071



160/ARS 300 159/ARS 498 158/ARS 279 157/ARS 298 156/ARS 240 155/ARS 217 154/ARS 140 153/ARS 197 152/ARS 578 151/ARS 231



180/ARS 260 179/ARS 296 178/ARS 272 177/ARS 179 176/ARS 271 175/ARS 292 174/ARS 176 173/ARS 138 172/ARS 117 171/ARS 155



200/ARS 470 199/ARS 450 198/ARS 486 197/ARS 428 196/ARS 295 195/ARS 409 194/ARS 430 193/ARS 410 192/ARS 158 191/ARS 100

*Codes in red correspond to ARS Color
Codes in Black correspond to C&C Milano Color*

*Codes in red correspond to ARS Color
Codes in Black correspond to C&C Milano Color*



010/ARS 002



009/ARS 042



008/ARS 332



007/ARS 335



006/ARS 125



005/ARS 027



004/ARS 009



003/ARS 046



002/ARS 124



001/ARS 109



030/ARS 314



029/ARS 316



028/ARS 451



027/ARS 413



026/ARS 318



025/ARS 337



024/ARS 375



023/ARS 491



022/ARS 397



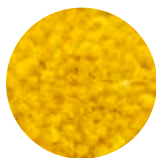
021/ARS 495



050/ARS 371



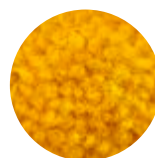
049/ARS 433



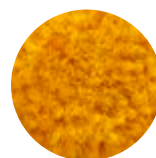
048/ARS 471



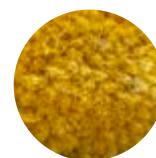
047/ARS 319



046/ARS 414



045/ARS 338



044/ARS 376



043/ARS 356



042/ARS 532



041/ARS 474



070/ARS 434



069/ARS 377



068/ARS 585



067/ARS 565



066/ARS 346



065/ARS 366



064/ARS 462



063/ARS 583



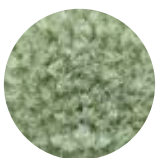
062/ARS 545



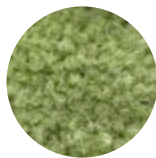
061/ARS 582



090/ARS 383



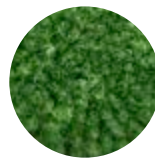
089/ARS 382



088/ARS 384



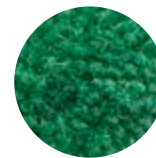
087/ARS 365



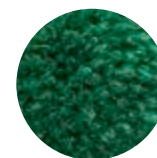
086/ARS 306



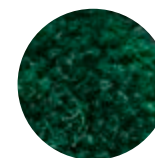
085/ARS 364



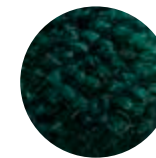
084/ARS 325



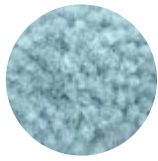
083/ARS 403



082/ARS 402



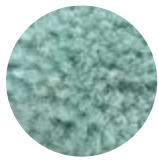
081/ARS 425



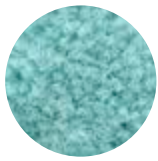
110/ARS 490



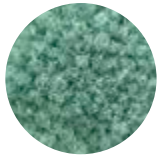
109/ARS 488



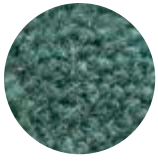
108/ARS 361



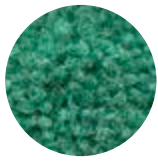
107/ARS 330



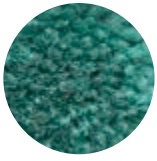
106/ARS 343



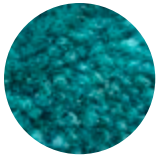
105/ARS 530



104/ARS 362



103/ARS 388



102/ARS 370



101/ARS 389



130/ARS 574



129/ARS 143



128/ARS 458



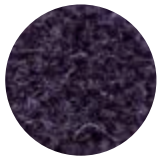
127/ARS 420



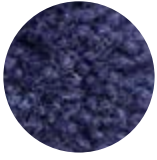
126/ARS 478



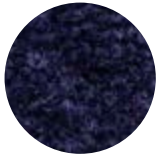
125/ARS 592



124/ARS 572



123/ARS 573



122/ARS 571



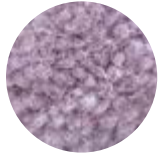
121/ARS 597



150/ARS 589



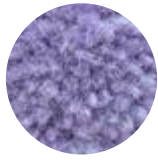
149/ARS 459



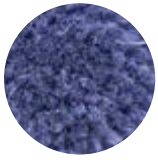
148/ARS 477



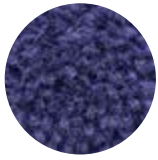
147/ARS 534



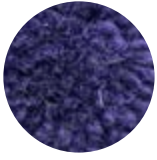
146/ARS 514



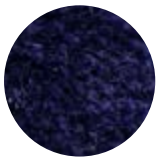
145/ARS 554



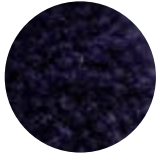
144/ARS 533



143/ARS 553



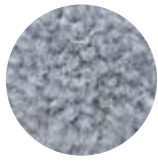
142/ARS 552



141/ARS 591



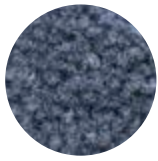
170/ARS 280



169/ARS 594



168/ARS 517



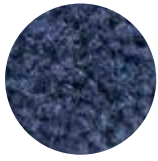
167/ARS 576



166/ARS 595



165/ARS 519



164/ARS 198



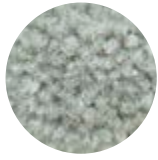
163/ARS 596



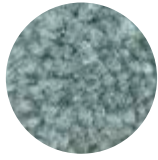
162/ARS 539



161/ARS 557



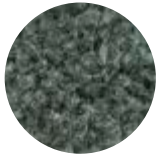
190/ARS 588



189/ARS 549



188/ARS 587



187/ARS 548



186/ARS 566



185/ARS 563



184/ARS 528



183/ARS 507



182/ARS 526



181/ARS 600

Codes in red correspond to ARS Color
Codes in Black correspond to C&C Milano Color



Lavaggio a mano 30°C, muovere delicatamente senza strofinare, tirare o torcere - Hand wash under 30°C (86 F) only



Il tessile non sopporta il trattamento con il cloro - No bleaching



Lavabile con tetracloroetilene, monofluoro, triclorometano e idrocarburi - Medium dry treatment only



Il tessile non sopporta l'asciugatura in tamburo ad aria calda - No tumble-dry



Asciugatura in orizzontale - Horizontal dry



Cartella colori pom pom - Pom pom colours card



Pattern personalizzabile - Customize your pattern



Fibre naturali - Natural fibers



Poliestere riciclato - Recycled polyester



Da esterno - Outdoor



Tessitura a mano Kilim - Hand woven Kilim

C & C

MILANO