

D & C

MILANO

EOLIE





Un viaggio tra fascino ed emozioni forti: la collezione **EOLIE** di C&C Milano racconta di terra, mare, pietre e vulcani. Una raccolta di tessuti che diventa un paesaggio di bellezza e stile.

GLI UNITI "STRUTTURATI": Un primo gruppo di tessuti monocolori per la decorazione di interni è caratterizzato dalla prevalenza del lino, materiale di elezione per C&C Milano e fibra consapevole per eccellenza. *Messina, Enna, Bronte* e *Bogotá* evocano le sabbie di ciottoli, la cenere e i lapilli attraverso texture e colori che spaziano dal cenere al nero carbone, con tocchi di sabbia e sfumature di grigio.

I MISTI "NATURALI": I fondali acquamarina, la pietra lavica, la sabbia bianca lunare e l'arancio dei fichi d'India caratterizzano il paesaggio eoliano definendo il secondo gruppo di tessuti per imbottiti e decorazione. La vegetazione che cresce selvaggia tra la roccia il fuoco e l'acqua delle isole dà corpo alla macchia mediterranea che si staglia sul mare: *Castillo* e *Cartagena* sono caratterizzati da una composizione naturale al 100%, grazie a materiali quali cotone, lino e lana, alla loro struttura importante e ai colori dominanti.

OUTDOOR AL 100%: Il rapporto dialettico tra l'interno e l'esterno è assicurato da una famiglia di tessuti dal martindale a prova di tempo ed usura. *Campo, Calle, Plaza* (quest'ultimo anche fire-retardant) sono definiti da tonalità pure ed essenziali. Come le isole che danno il nome alla collezione, stregano grazie alla loro discreta eleganza e all'eclettismo che ne faranno un must per rivestimento di sedute e complementi.

I BOUTIS: La riga, da sempre un classico C&C Milano per copri letto, dà carattere al letto e lo rende protagonista. Il robusto cotone rigato in doppia altezza, nelle fresche varianti cromatiche avorio-rosso, blu e nero si conferma un elemento versatile e insieme un best-seller senza tempo. *Marina rigato* ed *Elba* completano la gamma dei cotoni pesanti dedicati alla decorazione e al rivestimento di gusto squisitamente mediterraneo.

BLACK & WHITE: Il brief era creare un tessuto prezioso ma nel contempo adatto a vari usi, come tende o lenzuola. Il risultato? *Diana* e *Diana barré* (rigato bianco-nero), tessuti in grande altezza, in raso di lino fresco ed elegante insieme, per un gusto raffinato e minimalista.

RISVEGLI DI STILE: Biancheria sartoriale in primo piano grazie a lenzuola dalla manifattura impeccabile, ma soprattutto che rispettano la sostenibilità ambientale: se pensiamo al connubio eccellenza-eleganza, allora lasciamoci ispirare dalle finiture perfette dei nuovi modelli in lino o cotone per il letto dei modelli *Egeo* (un ricamo a doppio colore con triplo bourdon a diverso spessore, mentre nella sua versione per il bagno si mantiene a colore unico) e *Warhol* (con bordo applicato). La trapunta, ça va sans dire, ha un'imbottitura in cashmere rigenerato (*New Life Cashmere* di C&C Milano).

A journey inspiring passion and charm: **EOLIE** echoes the raw textures of land, sea, stones and volcanoes. A collection of fabrics that become a landscape of beauty and style.

THE "STRUCTURED" ONES: Monochrome fabrics for interior use, *Messina, Enna, Bronte* and *Bogotá* evoke pebble beaches, volcanic ash and lapilli. A play on shades, ranging from ash to charcoal black, with touches of sand. Texture is then created by the prevalence of linen, the material of choice for C&C Milano.

THE "NATURAL BLEND" ONES: The seabed, the lava stone, the white lunar sand and the orange of the prickly pears characterize the Aeolian landscape defining the second group of fabrics: *Castillo* and *Cartagena*. 100% natural composition; using materials such as cotton, linen and wool, their structure and dominant colours mirror the vegetation that grows wild between the rocks, the fire and the water of the islands.

THE "100% OUTDOOR" ONES: The natural flow between inside and the outside spaces is assured by *Campo, Calle* and *Plaza* (the latter also fire-retardant). A family of fabrics defined by pure and essential shades. Like the islands that give name to the collection, they bewitch with their raw elegance and eclecticism, making them a must for any upholstery collection.

THE BOUTIS: Stripes, always a classic for C&C Milano, giving character to bedlinen and making it pop. *Marina rigato* and *Elba*, sturdy double-width striped cottons, in classic colourways of ivory-red, ivory-blue and ivory-black, prove to be versatile additions, at the same time, timeless best-sellers.

BLACK & WHITE: Given a brief to create a precious fabric, suitable for multiple use, such as curtains or sheets, resulted in *Diana* and *Diana barré*. These striped, black-white fabrics are wide width, satin finish linen, perfect for contemporary minimal taste.

REVIVAL OF STYLE: While known for impeccable workmanship when creating the Home Collection C&C Milano always strive to respect environmental sustainability and find new ways to ensure our world is protected for future generations. *Egeo*, bedlinen available in linen or cotton, is a two colour embroidery design with triple bourdon detail. Paired with single colours options for the bathroom this set is a luxury addition to any home. *Warhol*, a quilt with applied edges, filled with C&C Milano's *New Life Cashmere*, a manufacture process and concept that drives sustainability forward within the high end market.

(left to right) Cushions **Ibiscus** in Rua Fiesta 50x50 cm/20x20 inch, **Ibiscus** in Plaza 40x40 cm/16x16 inch cod.218219, **Ibiscus** in Rua Sombrero 50x50 cm/20x20 inch, **Verbena** in Terry with Laveno millerighe border 40x30 cm/16x12 inch cod.218275, Beach towel **Panfilo** in Terry with Laveno millerighe border 100x180 cm/39x71 inch cod.218272, **Castellino** in Castellino twill barrè machè with knots fringes cod. 218273, **Panfilo** in Terry with Laveno millerighe border 100x180 cm/39x71 inch cod.218271, cushions **Verbena** in Terry with Laveno millerighe border 40x30 cm/16x12 inch cod.218275, **Ibiscus** in Plaza 40x40 cm/16x16 inch cod. 218219, **Ibiscus** in Rua Fiesta 50x30cm/20x12 inch, **Ibiscus** in Arezzo rigato 50x50 cm/20x20 inch



(left to right) Cushions **Ibiscus** in Rua Fiesta 40x40 cm/16x16 inch cod.218227, **Ibiscus** in Calle 40x40 cm/16x16 inch cod.218221, **Ibiscus** in Rua Sombrero 50x50 cm/20x20 inch, **Ibiscus** in Rua Fiesta 40x40 cm/16x16 inch, **Ibiscus** in Plaza 40x40 cm/16x16 inch cod.218220, **Ibiscus** in Plaza 40x40 cm/16x16 inch cod.218219, **Verbena** in Rua Sombrero with Rua Fiesta border 60x40 cm/24x16 inch cod. 214515, **Verbena** in Rua Fiesta with Rua Sombrero border 40x40 cm/16x16 inch cod. 218226



(left to right) Cushions **Ibiscus** in Plaza 40x40 cm/16x16 inch cod.218220, **Ibiscus** in Plaza 40x40 cm/16x16 inch cod.218219, **Ibiscus** in Calle 40x40 cm/16x16 inch cod.218221, **Ibiscus** in Miura 40x30 cm/16x12 inch cod.218284, **Ibiscus** in Miura 40x30 cm/16x12 inch cod.218283, **Ibiscus** in Calle 40x40 cm/16x16 inch cod.218221, **Ibiscus** in Plaza 40x40 cm/16x16 inch cod.218219, **Ibiscus** in Miura 40x30 cm/16x12 inch cod.218282, **Ibiscus** in Plaza 40x40 cm/16x16 inch cod.218220





SALON



(on sofa) Cushion **Karkadé** in Messina and Saturnia piping 40x40 cm/16x16 inch cod.218218. Cushion **Ibiscus** in Bronte 40x40 cm/16x16 inch cod.218184 (on armchair) Cushion **Ibiscus** in Enna with Fenice piping 40x40 cm/16x16 inch cod.218217, throw **Zeppola** 145x180 cm/57x70 inch cod.216565 (on the floor) Cushion **Zeppola** 50x50 cm/20x20 inch, Rug **Orione** 300x400 cm/118x147 inch (right page) Cushions **Verbena** in Castillo with Fenice border 40x40 cm/16x16 inch cod.218188. Cushion **Ibiscus** in Castillo 50x50 cm/20x20 inch cod.218187, Cushion **Ibiscus** in Bogotá with Saturnia piping 40x40 cm/16x16 inch cod.218218. Throw **Raperonzolo** 145x180 cm/57x70 inch cod.216564.



(left) Throw **Zeppola** 145x180 cm/57x71 inch cod.216565, Cushions **Karkadè** in Enna with Fenice piping 40x40 cm/16x16 inch cod.218217, **Karkadè** in Messina and Saturnia piping 40x40 cm/16x16 inch cod.218218, **Verbera** in Volterra with Cartagena border 40x40 cm/16x16 inch cod.218216, **Ibiscus** in Cartagena 50x50 cm/20x20 inch cod.218281. Curtain in **Diana** white cod.218713.
(right) **Ibiscus** in Cartagena 50x50 cm/20x20 inch cod.218213, **Karkadè** in Saturnia and Cartagena border 40x40 cm/16x16 inch cod.218214, **Karkadè** in Bronte with Saturnia piping 40x40 cm/16x16 inch cod.218182.



Table mat **Magnolia** in Calle 53x38 cm/21x15 inch cod.218250, napkin **Magnolia** in Cerro 45x45 cm/16x16 inch cod.217626, napkin **Aloe** in Persico Machè 45x45 cm/16x16 inch, tablecloth **Magnolia** in Laveno Piazzato 290x270 cm/114x106 inch.

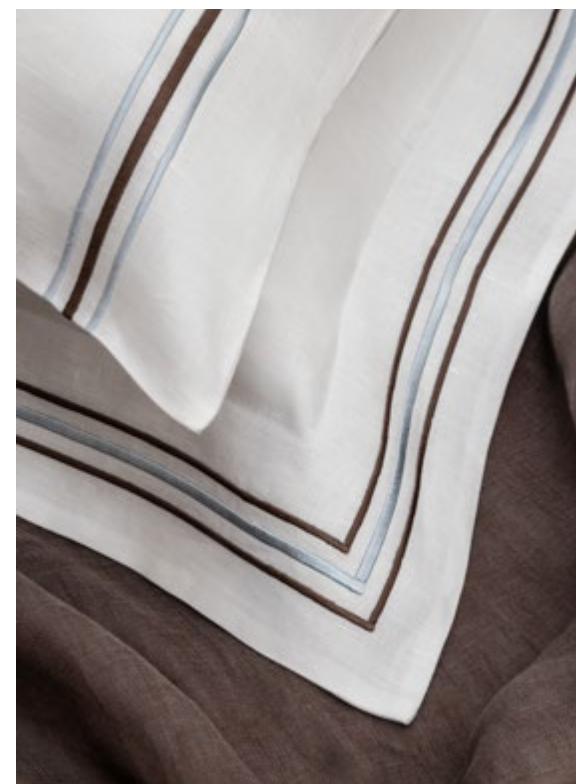


UPPER DECK

Table mat **Magnolia** in Calle 53x38 cm/21x15
inch cod.218248 and napkin **Magnolia** in
Mandolino 40x40 cm/16x16 inch



MASTER CABIN



Decorative cushions **Ibiscus** in Castillo
50x50 cm/20x20 inch cod.218189,
Verbena 40x40 cm/16x16 inch cod.218190.
Shams, pillowcases and top sheet **Egeo**
in Cerro 80x50 cm/31x20 inch - 290x310
cm/114x122 inch cod.218245-218246-218244,
quilted throw **Austro** in Mandolino; filling in New
Life Cashmere 140x220 cm/55x87 inch cod.218247



Bath Set **Egeo** in Terry with bourdon 120x150 cm/47x59 inch, 60x110 cm/24x43 inch, 40x60 cm/16x24 inch, 20x30 cm/8x12 inch cod. 218252

Bath Set **Egeo** in Terry with bourdon 120x150 cm/47x59 inch, 60x110 cm/24x43 inch, 40x60 cm/16x24 inch, 20x30 cm/8x12 inch cod. 218267

Shams and top sheet **Warhol** in
Ravenna 80x50 cm/31x21 inch - 180x275
cm/71x108 inch cod.218240-218238.
bed cover **Galapagos** in Marina Rigato
240x270 cm/94x106 inch cod.218235

GUEST CABIN





Bath set **Anemone** in Terry with piping 120x150 cm/47x59 inch, 60x110 cm/24x43 inch, 40x60cm/18x24 inch



VIP CABIN



Shams and top sheet **Malta** with Cerro greca border 80x50 cm/31x20 inch, shams **Pantelleria** with Cerro 1/2 spina, 80x50 cm/28x20 inch, knitted throw **Eolo** 220x240 cm/87x94 inch cod.216589, dressing gown **Corso Magenta** in Cerro cod.202591



BRONTE



215370 Ash
97% Li, 3% Pa
h 135 cm/53 inch - 950 g/mq



MESSINA



215368 Ash
72% Li, 13% Wo, 12% Co, 3% Pa
h 130 cm/51 inch - 800 g/mq



ENNA



215371 Gravel
90%Li, 5%Vi, 5% Pa
h 130 cm/51 inch - 900 g/mq



BOGOTA'



216860 Natural
65%Li, 12%Cv, 11%Co, 12%Af
h 130 cm/51 inch - 810 g/mq



CASTILLO



216863 Natural/Anthracite
41%Co, 30%Li, 19%Cv, 5%Bamb 5%Pa
h 130 cm/51 inch - 730 g/mq



CASTILLO



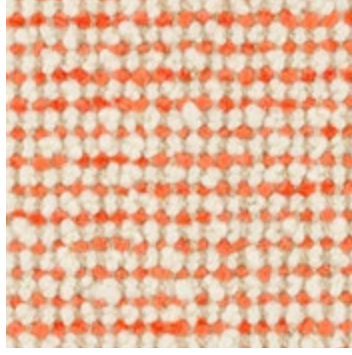
216862 Natural/White
41%Co, 30%Li, 19%Cv, 5%Bamb 5%Pa
h 130 cm/51 inch - 730 g/mq



CARTAGENA



217510 Ivory/Aquamarine
30%Co, 24%Wo, 22%Cv, 15%Li, 9%Af
h 130 cm/51 inch - 800 g/mq



CARTAGENA



217509 Ivory/Orange
30%Co, 24%Wo, 22%Cv, 15%Li, 9%Af
h 130 cm/51 inch - 800 g/mq



CASTILLO



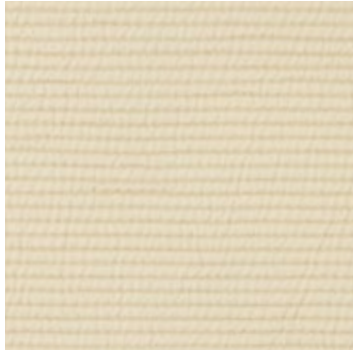
216861 Natural/Sunflower
41%Co, 30%Li, 19%Cv, 5%Bamb 5%Pa
h 130 cm/51 inch - 730 g/mq



CARTAGENA



217514 Ivory/Anthracite
30%Co, 24%Wo, 22%Cv, 15%Li, 9%Af
h 130 cm/51 inch - 800 g/mq



ELBA



216867 Ivory
100% Cotton
h 300 cm/118 inch- 410 g/mq



MARINA RIGATO



216865 Ivory/Blue
100% Cotton
h 300 cm/118 inch- 475 g/mq



MARINA RIGATO



216864 Ivory/Red
100% Cotton
h 300 cm/118 inch- 475 g/mq



MARINA RIGATO



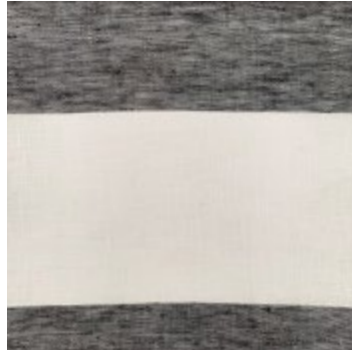
216866 Ivory/Black
100% Cotton
h 300 cm/118 inch- 475 g/mq



ELBA



216868 Optical white
100% Cotton
h 300 cm/118 inch- 410 g/mq



DIANABARRÉ



218720 White/Black stripe 10 cm
100% Linen
h 330 cm/130 inch- 105 g/mq



DIANA BARRÉ



218722 White/Black stripe 3 mm
100% Linen
h 330 cm/130 inch- 105 g/mq



DIANA



218717 Natural
100% Linen
h 330 cm/130 inch- 105 g/mq



DIANA



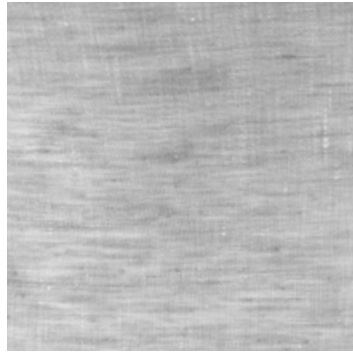
218713 White
100% Linen
h 330 cm/130 inch- 105 g/mq



DIANA



218719 Black
100% Linen
h 330 cm/130 inch- 105 g/mq



DIANA



218718 Grey
100% Linen
h 330 cm/130 inch- 105 g/mq



PLAZA



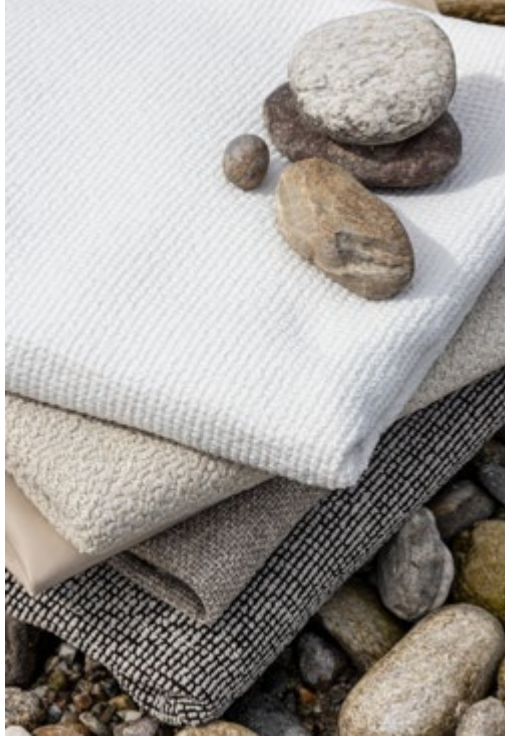
216691 White
100% Polypropylene
h 135 cm/53 inch - 750 g/mq



PLAZA



216692 Beige
100% Polypropylene
h 135 cm/53 inch - 750 g/mq



PLAZA



216693 Chestnut
100% Polypropylene
h 135 cm/53 inch - 750 g/mq



PLAZA



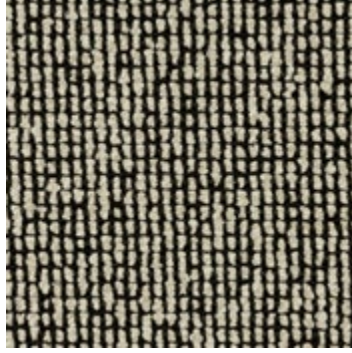
216694 Gravel
100% Polypropylene
h 135 cm/53 inch - 750 g/mq



CAMPO



217515 Ivory
100% Polypropylene
h 130 cm/53 inch - 800 g/mq



CALLE



216859 Black/Natural
100% Polypropylene
h 135 cm/53 inch - 840 g/mq



CALLE



216857 White/Natural
100% Polypropylene
h 135 cm/53 inch - 840 g/mq



CALLE



216858 White
100% Polypropylene
h 135 cm/53 inch - 840 g/mq



Photo by Laila Pozzo
Thanks to Sanlorenzo Yacht and Ginori 1735

HONG KONG
LONDON
MILANO
MÜNCHEN
NEW YORK
PARIS

